

Recombinant Human MDH2 Protein (His Tag)

Catalog Number:PKSH032731



Note: Centrifuge before opening to ensure complete recovery of vial contents.

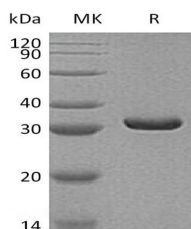
Description

Synonyms	Malate dehydrogenase;mitochondrial;MDH2
Species	Human
Expression Host	HEK293 Cells
Sequence	Ala25-Lys338
Accession	P40926
Calculated Molecular Weight	34.0 kDa
Observed molecular weight	33 kDa
Tag	C-His

Properties

Purity	> 95 % as determined by reducing SDS-PAGE.
Endotoxin	< 1.0 EU per µg of the protein as determined by the LAL method.
Storage	Store at < -20°C, stable for 6 months. Please minimize freeze-thaw cycles.
Shipping	This product is provided as liquid. It is shipped at frozen temperature with blue ice/gel packs. Upon receipt, store it immediately at < - 20°C.
Formulation	Supplied as a 0.2 µm filtered solution of 20mM PB, 150mM NaCl, pH 7.4.
Reconstitution	Not Applicable

Data



> 95 % as determined by reducing SDS-PAGE.

Background

Malate dehydrogenase, mitochondrial is a 338 amino acids protein that belongs to the LDH/MDH superfamily. MDH type 1 family. MDH2 catalyzes the reversible oxidation of malate to oxaloacetate, utilizing the NAD/NADH cofactor system in the citric acid cycle. MDH2 is localized to the mitochondria and takes part in the malate-aspartate shuttle that functions in the metabolic coordination between cytosol and mitochondria. MDH2 is highly expressed in the adrenal system, small intestine, heart and pancreas.

For Research Use Only

A Reliable Research Partner in Life Science and Medicine

Toll-free: 1-888-852-8623

Web: www.elabscience.com

Tel: 1-832-243-6086

Email: techsupport@elabscience.com

Fax: 1-832-243-6017