

Ly6c Polyclonal Antibody

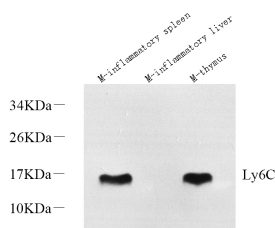
catalog number: E-AB-70362

Note: Centrifuge before opening to ensure complete recovery of vial contents.

Description	
Reactivity	Mouse
Immunogen	KLH conjugated Synthetic peptide corresponding to Mouse ly6c1
Host	Rabbit
Isotype	IgG
Purification	Affinity purification
Conjugation	Unconjugated
Buffer	Phosphate buffered solution, pH 7.4, containing 0.05% stabilizer, 1% protein protectant and 50% glycerol.

Applications	Recommended Dilution
WB	1:500-1:2000

Data



Western Blot analysis of various samples using Ly6c Polyclonal Antibody at dilution of 1:600.

Observed-MW:14 kDa

Calculated-MW:14 kDa

Preparation & Storage	
Storage	Store at -20°C Valid for 12 months. Avoid freeze / thaw cycles.
Shipping	The product is shipped with ice pack, upon receipt, store it immediately at the temperature recommended.

Background

Ly6C is a monocyte/macrophage and endothelial cell differentiation antigen regulated by interferon gamma, and may play a role in the development and maturation of lymphocytes. It is a member of the Ly6 multigene family of type V glycoposphatidylinositol anchored cell surface proteins. It is expressed on bone marrow cells, monocytes/macrophages, neutrophils, endothelial cells, and T cell subsets. Mice with the Ly6.2 allotype (e.g., AKR, C57BL, C57BR, C57L, DBA/2, PL, SJL, SWR, 129) have subsets of CD4+Ly6C+ and CD8+Ly6C+ cells, while Ly6.1 strains (e.g., A, BAL B/c, CBA, C3H/He, DBA/1, NZB) have only CD8+Ly6C+ lymphocytes.

For Research Use Only