

Elab Fluor® 647 Anti-Human CD226/DNAM-1 Antibody[11A8]

Catalog Number: E-AB-F1369M

Note: Centrifuge before opening to ensure complete recovery of vial contents.

Description

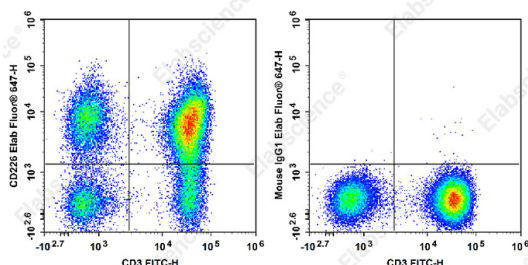
Reactivity	Human
Host	Mouse
Isotype	Mouse IgG1, κ
Clone No.	11A8
Isotype Control	Elab Fluor® 647 Mouse IgG1, κ Isotype Control[MOPC-21] [Product E-AB-F09792M]
Conjugation	Elab Fluor® 647
Conjugation Information	Elab Fluor® 647 is designed to be excited by the Red laser (627-640 nm) and detected using an optical filter centered near 670 nm (e.g., a 660/20 nm bandpass filter).
Storage Buffer	Phosphate buffered solution, pH 7.2, containing 0.09% stabilizer and 1% protein protectant.

Applications

Recommended usage

FCM	Each lot of this antibody is quality control tested by flow cytometric analysis. The amount of the reagent is suggested to be used 5 µL of antibody per test (million cells in 100 µL staining volume or per 100 µL of whole blood). Please check your vial before the experiment. Since applications vary, the appropriate dilutions must be determined for individual use.
-----	---

Data



Staining of normal human peripheral blood cells with FITC

Anti-Human CD3 Antibody and Elab Fluor® 647 Anti-Human CD226/DNAM-1 Antibody[11A8] (left) or Elab Fluor® 647 Mouse IgG1, κ Isotype Control (right). Cells in the lymphocytes gate were used for analysis.

Preparation & Storage

Storage	Keep as concentrated solution. This product can be stored at 2-8°C for 12 months. Please protected from prolonged exposure to light and do not freeze.
Shipping	Ice bag

Antigen Information

Alternate Names	DNAM-1
Uniprot ID	Q15762

For Research Use Only

Toll-free: 1-888-852-8623
Web: www.elabscience.com

Tel: 1-832-243-6086
Email: techsupport@elabscience.com

Fax: 1-832-243-6017

Rev. V2.0

Gene ID

10666

Background

DNAM-1 (CD226) is a ~65 kD glycoprotein expressed on cell surface of T cells, NK cells, monocytes/macrophages, platelets and megakaryocytes and a subset of B cells and a member of the immunoglobulin (Ig)-superfamily containing 2 Ig-like domains of the V-set. The ligands for CD226 are the poliovirus receptor (CD155) and its family member nectin-2 (CD112), which are broadly expressed on epithelial, endothelial and neuronal cells. CD226 is physically associated with LFA-1 in NK cells and activated T cells, and involved in LFA-1-mediated signaling.