

Purified Anti-Human HLA-G Antibody[MEM-G/11]

catalog number: AN006210P

Note: Centrifuge before opening to ensure complete recovery of vial contents.

Description

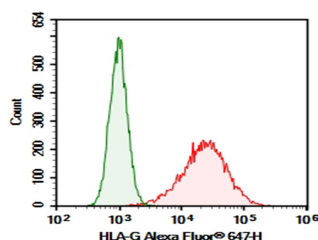
Reactivity	Human
Immunogen	Recombinant Human HLA-G protein
Host	Mouse
Isotype	Mouse IgG1, κ
Clone	MEM-G/11
Purification	>98%, Protein A/G purified
Conjugation	Unconjugated
buffer	PBS, pH 7.2. Contains 0.05% proclin 300.

Applications

Recommended Dilution

FCM	2 $\mu\text{g}/\text{mL}$ (1×10^5 - 5×10^5 cells)
------------	--

Data



JEG3 were stained with 0.2 μg Purified Anti-Human HLA-G Antibody[MEM-G/11] (Right) and 0.2 μg Mouse IgG1, κ Isotype Control (Left), followed by Alexa Fluor® 647-conjugated Goat Anti-Mouse IgG Secondary Antibody.

Preparation & Storage

Storage	Store at 4°C valid for 12 months or -20°C valid for long term storage, avoid freeze / thaw cycles.
Shipping	Order now, ship in 3 days

Background

For Research Use Only

Purified Anti-Human HLA-G Antibody[MEM-G/11]

catalog number: AN006210P



HLA-G Antibody (4H84) is an IgG1 κ mouse monoclonal HLA-G antibody (also designated HLA major histocompatibility complex, class I, G antibody, human leukocyte antigen (HLA) G antibody, 45 kDa transmembrane class I human leukocyte antigen G antibody, chromosome 6p22 gene complex class 1G antibody, placenta trophoblast marker antibody, or fetal derived placental cell marker antibody) that detects the HLA-G protein of mouse, rat and human origin by WB, IP, IF and IHC(P). HLA-G Antibody (4H84) is available as both the non-conjugated anti-HLA-G antibody form, as well as multiple conjugated forms of anti-HLA-G antibody, including agarose, HRP, PE, FITC and multiple Alexa Fluor® conjugates. Major histocompatibility complex (MHC), human leukocyte antigen (HLA) molecules are cell-surface receptors that bind foreign peptides and present them to T lymphocytes. MHC class I molecules consist of two polypeptide chains, an α or heavy chain, and a non-covalently associated protein, β -2-microglobulin. Cytotoxic T lymphocytes bind antigenic peptides presented by MHC class I molecules. Antigens that bind to MHC class I molecules are typically 8-10 residues in length and are stabilized in a peptide binding groove. MHC class II molecules are encoded by polymorphic MHC genes and consist of a non-covalent complex of an a and b chain. Helper T lymphocytes bind antigenic peptides presented by MHC class II molecules. MHC class II molecules bind 13-18 amino acid antigenic peptides. Accumulating in endosomal/lysosomal compartments and on the surface of B cells, HLA-DM and -DO molecules regulate binding of exogenous peptides to class II molecules (HLA-DR) by sustaining a conformation that favors peptide exchange. The differential structural properties of MHC class I and class II molecules account for their respective roles in activating different populations of T lymphocytes.

For Research Use Only

A Reliable Research Partner in Life Science and Medicine
Tel: 400-999-2100

Email: techsupport@elabscience.cn

Web: www.elabscience.cn

Rev. V1.4