

Recombinant Human S100A6 Protein (Baculovirus, His Tag)

Catalog Number: PKSH031347

Note: Centrifuge before opening to ensure complete recovery of vial contents.

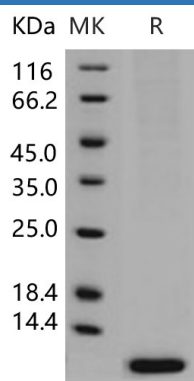
Description

| | |
|----------------------|--|
| Species | Human |
| Source | Baculovirus-Insect Cells-derived Human S100A6 protein Met 1-Gly 90, with an C-terminal His |
| Calculated MW | 12 kDa |
| Observed MW | 12 kDa |
| Accession | NP_055439.1 |
| Bio-activity | Not validated for activity |

Properties

| | |
|-----------------------|---|
| Purity | > 96 % as determined by reducing SDS-PAGE. |
| Endotoxin | < 1.0 EU per µg of the protein as determined by the LAL method. |
| Storage | Generally, lyophilized proteins are stable for up to 12 months when stored at -20 to -80°C. Reconstituted protein solution can be stored at 4-8°C for 2-7 days. Aliquots of reconstituted samples are stable at < -20°C for 3 months. |
| Shipping | This product is provided as lyophilized powder which is shipped with ice packs. |
| Formulation | Lyophilized from sterile 50mM Tris, 100mM NaCl, 0.5mM PMSF, 1mM TCEP, pH 8.0. Normally 5% - 8% trehalose, mannitol and 0.01% Tween 80 are added as protectants before lyophilization. Please refer to the specific buffer information in the printed manual. |
| Reconstitution | Please refer to the printed manual for detailed information. |

Data



> 96 % as determined by reducing SDS-PAGE.

Background

S100 proteins are a family of low molecular weight proteins found in vertebrates, characterized by two EF-hand calcium-binding motifs. There are at least 21 different S100 proteins; the name is derived from the fact that the protein is 100% soluble in ammonium sulfate at neutral pH. Most S100 proteins are disulfide-linked homodimers and are normally present in cells derived from the neural crest; chondrocytes; macrophages; dendritic cells; etc. S100 proteins have been implicated in a variety of intracellular and extracellular functions. They are involved in regulation of protein phosphorylation; transcription factors; the dynamics of cytoskeleton constituents; enzyme activities; cell growth and differentiation; and the inflammatory response. S100A6 (S100 calcium binding protein A6) is a member of the S100 family of proteins; and functions in prolactin secretion; and exocytosis. Chromosomal rearrangements and altered expression of S100A6 have been implicated in melanoma.

For Research Use Only

Toll-free: 1-888-852-8623
Web: www.elabscience.com

Tel: 1-832-243-6086
Email: techsupport@elabscience.com

Fax: 1-832-243-6017