

MOB1A Polyclonal Antibody

Catalog Number:E-AB-16616



Note: Centrifuge before opening to ensure complete recovery of vial contents.

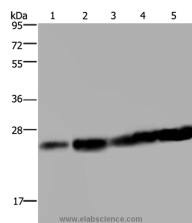
Description

Reactivity	Human,Mouse,Rat
Immunogen	Synthetic peptide of human MOB1A
Host	Rabbit
Isotype	IgG
Purification	Affinity purification
Conjugation	Unconjugated
Formulation	PBS with 0.05% sodium azide and 50% glycerol, PH7.4

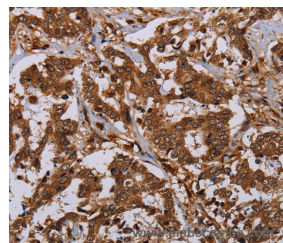
Applications Recommended Dilution

WB	1:500-1:2000
IHC	1:50-1:200

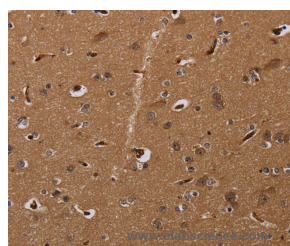
Data



Western Blot analysis of HeLa and Jurkat cell, Mouse liver tissue, K562 and A375 cell using MOB1A Polyclonal Antibody at dilution of 1:200
Calculated Mw:25kDa



Immunohistochemistry of paraffin-embedded Human liver cancer using MOB1A Polyclonal Antibody at dilution of 1:30



Immunohistochemistry of paraffin-embedded Human brain using MOB1A Polyclonal Antibody at dilution of 1:30

Preparation & Storage

Storage Store at -20°C. Avoid freeze / thaw cycles.

Background

MOB1 was first identified in yeast as a protein that binds to Mps with essential roles in the completion of mitosis and the maintenance of ploidy. Its Drosophila and mammalian homologs, Mats and MOB1, respectively, are involved in the Hippo signaling tumor suppressor pathway, which plays a critical role in organ size regulation and which has been

For Research Use Only

A Reliable Research Partner in Life Science and Medicine

Toll-free: 1-888-852-8623

Web: www.elabscience.com

Tel: 1-832-243-6086

Email: techsupport@elabscience.com

Fax: 1-832-243-6017

MOB1A Polyclonal Antibody

Catalog Number: E-AB-16616



implicated in cancer development . There are two MOB1 proteins in humans, MOB1 α and MOB1 β , that are encoded by two different genes but which have greater than 95% amino acid sequence identity.

For Research Use Only

A Reliable Research Partner in Life Science and Medicine

Toll-free: 1-888-852-8623

Tel: 1-832-243-6086

Fax: 1-832-243-6017

Web: www.elabscience.com

Email: techsupport@elabscience.com