

# SHPRH Polyclonal Antibody

Catalog Number: E-AB-17031



**Note:** Centrifuge before opening to ensure complete recovery of vial contents.

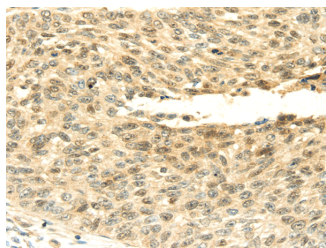
## Description

<b>Reactivity</b>	Human, Mouse
<b>Immunogen</b>	Fusion protein of human SHPRH
<b>Host</b>	Rabbit
<b>Isotype</b>	IgG
<b>Purification</b>	Affinity purification
<b>Conjugation</b>	Unconjugated
<b>Formulation</b>	PBS with 0.05% sodium azide and 50% glycerol, PH7.4

## Applications Recommended Dilution

<b>IHC</b>	1:30-150
<b>ELISA</b>	1:2000-10000

## Data



Immunohistochemistry of paraffin-embedded Human lung cancer tissue using SHPRH Polyclonal Antibody at dilution 1:45

## Preparation & Storage

**Storage** Store at -20°C. Avoid freeze / thaw cycles.

## Background

SHPRH is a ubiquitously expressed protein that contains motifs characteristic of several DNA repair proteins, transcription factors, and helicases. SHPRH is a functional homolog of *S. cerevisiae* RAD5 (Unk et al., 2006 [PubMed 17108083]).

## For Research Use Only

A Reliable Research Partner in Life Science and Medicine

Toll-free: 1-888-852-8623

Web: [www.elabscience.com](http://www.elabscience.com)

Tel: 1-832-243-6086

Email: [techsupport@elabscience.com](mailto:techsupport@elabscience.com)

Fax: 1-832-243-6017