

## Recombinant PLC $\gamma$ 1 Monoclonal Antibody

catalog number: **AN300669L**

**Note:** Centrifuge before opening to ensure complete recovery of vial contents.

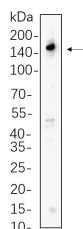
### Description

|                     |   |
|---------------------|---|
| <b>Reactivity</b>   | Human;Mouse;Rat   |
| <b>Immunogen</b>    | Recombinant Human PLC $\gamma$ 1 protein                        |
| <b>Host</b>         | Rabbit  |
| <b>Isotype</b>      | IgG, $\kappa$   |
| <b>Clone</b>        | 2C7   |
| <b>Purification</b> | Protein A   |
| <b>Buffer</b>       | PBS, 50% glycerol, 0.05% Proclin 300, 0.05% protein protectant. |

### Applications Recommended Dilution

|           |                |
|-----------|----------------|
| <b>WB</b> | 1:2000-1:10000 |
|-----------|----------------|

### Data



Western Blot with Recombinant PLC  $\gamma$ 1 Monoclonal Antibody at dilution of 1:1000 dilution. Lane A: Rat brain cell lysate.

**Observed-MW:149 kDa**

**Calculated-MW:149 kDa**

### Preparation & Storage

|                 |   |
|-----------------|---|
| <b>Storage</b>  | Store at -20°C Valid for 12 months. Avoid freeze / thaw cycles. |
| <b>Shipping</b> | Ice bag   |

### Background

The protein encoded by this gene catalyzes the formation of inositol 1,4,5-trisphosphate and diacylglycerol from phosphatidylinositol 4,5-bisphosphate. This reaction uses calcium as a cofactor and plays an important role in the intracellular transduction of receptor-mediated tyrosine kinase activators. For example, when activated by SRC, the encoded protein causes the Ras guanine nucleotide exchange factor RasGRP1 to translocate to the Golgi, where it activates Ras. Also, this protein has been shown to be a major substrate for heparin-binding growth factor 1 (acidic fibroblast growth factor)-activated tyrosine kinase. Two transcript variants encoding different isoforms have been found for this gene.

### For Research Use Only

Toll-free: 1-888-852-8623  
Web: [www.elabscience.com](http://www.elabscience.com)

Tel: 1-832-243-6086  
Email: [techsupport@elabscience.com](mailto:techsupport@elabscience.com)

Fax: 1-832-243-6017

Rev. V1.0