

## MCHR1 Polyclonal Antibody

**catalog number: E-AB-13405**

**Note:** Centrifuge before opening to ensure complete recovery of vial contents.

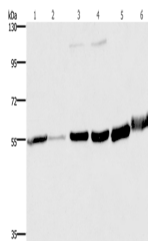
### Description

<b>Reactivity</b>	Human;Mouse;Rat
<b>Immunogen</b>	Synthetic peptide of human MCHR1
<b>Host</b>	Rabbit
<b>Isotype</b>	IgG
<b>Purification</b>	Affinity purification
<b>Buffer</b>	Phosphate buffered solution, pH 7.4, containing 0.05% stabilizer and 50% glycerol.

### Applications

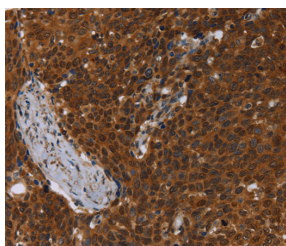
Applications	Recommended Dilution
<b>WB</b>	1:500-1:2000
<b>IHC</b>	1:50-1:200

### Data

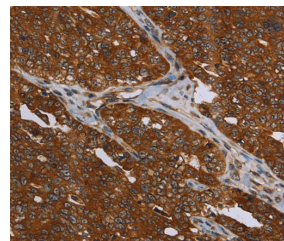


Western Blot analysis of Human fetal liver and testis tissue, 293T and A172 cell, Mouse brain and Human fetal brain tissue using MCHR1 Polyclonal Antibody at dilution of 1:350

**Calculated-MW:46 kDa**



Immunohistochemistry of paraffin-embedded Human cervical cancer using MCHR1 Polyclonal Antibody at dilution of 1:30



Immunohistochemistry of paraffin-embedded Human ovarian cancer using MCHR1 Polyclonal Antibody at dilution of 1:30

### Preparation & Storage

<b>Storage</b>	Store at -20°C Valid for 12 months. Avoid freeze / thaw cycles.
<b>Shipping</b>	The product is shipped with ice pack, upon receipt, store it immediately at the temperature recommended.

### Background

### For Research Use Only

MCHR1, a member of the Gprotein coupled receptor family 1, is an integral plasma membrane protein which binds melanin concentrating hormone. MCHR1 can inhibit cAMP accumulation and stimulate intracellular calcium flux, and is probably involved in the neuronal regulation of food consumption. Although structurally similar to somatostatin receptors, MCHR1 does not seem to bind somatostatin.

## For Research Use Only

Toll-free: 1-888-852-8623  
Web: [www.elabscience.com](http://www.elabscience.com)

Tel: 1-832-243-6086  
Email: [techsupport@elabscience.com](mailto:techsupport@elabscience.com)

Fax: 1-832-243-6017

Rev. V1.7