

MHCG Polyclonal Antibody

catalog number: E-AB-40663

Note: Centrifuge before opening to ensure complete recovery of vial contents.

Description

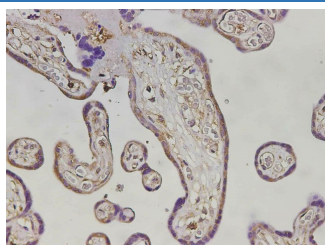
Reactivity	Human
Immunogen	Recombinant Human MHCG protein expressed by E.coli
Host	Rabbit
Isotype	IgG
Purification	Antigen Affinity Purification
Conjugation	Unconjugated
buffer	PBS with 0.05% proclin 300, 1% protective protein and 50% glycerol,pH7.4

Applications

Recommended Dilution

IHC	1:1500-1:3000
------------	---------------

Data



Immunohistochemistry of paraffin-embedded Human placenta tissue using MHCG Polyclonal Antibody at dilution of 1:3000(×400)

Preparation & Storage

Storage	Store at -20°C Valid for 12 months. Avoid freeze / thaw cycles.
Shipping	The product is shipped with ice pack,upon receipt,store it immediately at the temperature recommended.

Background

HLA-G Antibody (4H84) is an IgG1 κ mouse monoclonal HLA-G antibody (also designated HLA major histocompatibility complex, class I, G antibody, human leukocyte antigen (HLA) G antibody, 45 kDa transmembrane class I human leukocyte antigen G antibody, chromosome 6p22 gene complex class I G antibody, placenta trophoblast marker antibody, or fetal derived placental cell marker antibody) that detects the HLA-G protein of mouse, rat and human origin by WB, IP, IF and IHC(P). HLA-G Antibody (4H84) is available as both the non-conjugated anti-HLA-G antibody form, as well as multiple conjugated forms of anti-HLA-G antibody, including agarose, HRP, PE, FITC and multiple Alexa Fluor[®] conjugates. Major histocompatibility complex (MHC), human leukocyte antigen (HLA) molecules are cell-surface receptors that bind foreign peptides and present them to T lymphocytes. MHC class I molecules consist of two polypeptide chains, an α or heavy chain, and a non-covalently associated protein, β -2-microglobulin. Cytotoxic T lymphocytes bind antigenic peptides presented by MHC class I molecules. Antigens that bind to MHC class I molecules are typically 8-10 residues in length and are stabilized in a peptide binding groove. MHC class II molecules are encoded by polymorphic MHC genes and consist of a non-covalent complex of an a and b chain. Helper T lymphocytes bind antigenic peptides presented by MHC class II molecules. MHC class II molecules bind 13-18 amino acid antigenic peptides. Accumulating in endosomal/lysosomal compartments and on the surface of B cells, HLA-DM and -DO molecules regulate binding of exogenous peptides to class II molecules (HLA-DR) by sustaining a conformation that favors peptide exchange. The differential structural properties of MHC class I and class II molecules account for their respective roles in activating different populations of T lymphocytes.

For Research Use Only