

DPEP2 Polyclonal Antibody

Catalog Number: E-AB-91182

Note: Centrifuge before opening to ensure complete recovery of vial contents.

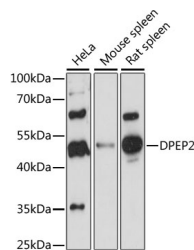
Description

Reactivity	Human, Mouse, Rat
Immunogen	Recombinant fusion protein of human DPEP2
Host	Rabbit
Isotype	IgG
Purification	Affinity purification
Conjugation	Unconjugated
Formulation	PBS with 0.01% thiomersal, 50% glycerol, pH 7.3.

Applications Recommended Dilution

WB	1:200-1:2000
-----------	--------------

Data



Western blot analysis of extracts of various cell lines using DPEP2 Polyclonal Antibody at 1:1000 dilution.

Observed Mw: 53kDa

Calculated Mw: 43kDa/53kDa

Preparation & Storage

Storage Store at -20°C. Avoid freeze/thaw cycles.

Background

DPEP2 belongs to the membrane-bound dipeptidase (EC 3.4.13.19) family. These enzymes hydrolyze a variety of dipeptides, including leukotriene D4, the beta-lactam ring of some antibiotics, and cystinyl-bis-glycine (cys-bis-gly) formed during glutathione degradation (Habib et al., 2003 [PubMed 12738806]). [supplied by OMIM, Mar 2008]

For Research Use Only

A Reliable Research Partner in Life Science and Medicine

Toll-free: 1-888-852-8623

Web: www.elabscience.com

Tel: 1-832-243-6086

Email: techsupport@elabscience.com

Fax: 1-832-243-6017