

HMOX2 Polyclonal Antibody

Catalog Number:E-AB-10367



Note: Centrifuge before opening to ensure complete recovery of vial contents.

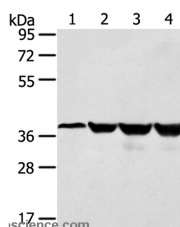
Description

Reactivity	Human ,Mouse ,Rat
Immunogen	Recombinant protein of human HMOX2
Host	Rabbit
Isotype	IgG
Purification	Affinity purification
Conjugation	Unconjugated
Formulation	PBS with 0.05% sodium azide and 50% glycerol, PH7.4

Applications Recommended Dilution

WB	1:200-1:1000
-----------	--------------

Data



Western Blot analysis of Human normal liver tissue and hepg2 cell, Jurkat and K562 cell using HMOX2

Polyclonal Antibody at dilution of 1:550

Observed Mw:Refer to figures

Calculated Mw:36kDa

Preparation & Storage

Storage Store at -20°C. Avoid freeze / thaw cycles.

Background

Heme oxygenase, an essential enzyme in heme catabolism, cleaves heme to form biliverdin, which is subsequently converted to bilirubin by biliverdin reductase, and carbon monoxide, a putative neurotransmitter. Heme oxygenase activity is induced by its substrate heme and by various nonheme substances. Heme oxygenase occurs as 2 isozymes, an inducible heme oxygenase-1 and a constitutive heme oxygenase-2. HMOX1 and HMOX2 belong to the heme oxygenase family. Alternative splice variants encoding the same protein have been identified at this locus.

For Research Use Only

A Reliable Research Partner in Life Science and Medicine

Toll-free: 1-888-852-8623

Web: www.elabscience.com

Tel: 1-832-243-6086

Email: techsupport@elabscience.com

Fax: 1-832-243-6017