

PRKCSH Polyclonal Antibody

catalog number: **E-AB-92564**

Note: Centrifuge before opening to ensure complete recovery of vial contents.

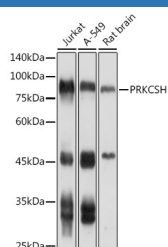
Description

Reactivity	Human;Mouse;Rat
Immunogen	Recombinant fusion protein of human PRKCSH
Host	Rabbit
Isotype	IgG
Purification	Affinity purification
Buffer	Phosphate buffered solution, pH 7.4, containing 0.05% stabilizer and 50% glycerol.

Applications Recommended Dilution

WB	1:500-1:1000
-----------	--------------

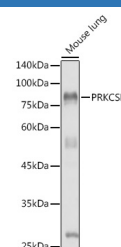
Data



Western blot analysis of extracts of various cell lines using PRKCSH Polyclonal Antibody at 1:1000 dilution.

Observed-MW:80 kDa

Calculated-MW:59 kDa



Western blot analysis of extracts of Mouse lung using PRKCSH Polyclonal Antibody at 1:1000 dilution.

Observed-MW:80 kDa

Calculated-MW:59 kDa

Preparation & Storage

Storage	Store at -20°C Valid for 12 months. Avoid freeze / thaw cycles.
Shipping	The product is shipped with ice pack, upon receipt, store it immediately at the temperature recommended.

Background

This gene encodes the beta-subunit of glucosidase II, an N-linked glycan-processing enzyme in the endoplasmic reticulum. The encoded protein is an acidic phosphoprotein known to be a substrate for protein kinase C. Mutations in this gene have been associated with the autosomal dominant polycystic liver disease. Alternative splicing results in multiple transcript variants.

For Research Use Only