

FITC Anti-Rat CD45RA Antibody[OX-33]

Catalog Number: E-AB-F1306C

Note: Centrifuge before opening to ensure complete recovery of vial contents.

Description

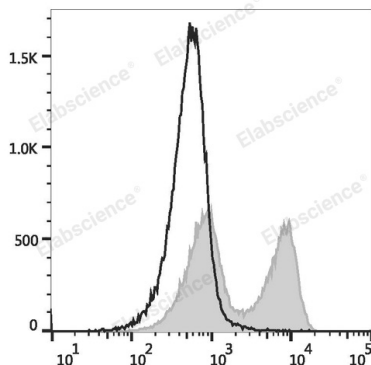
Reactivity	Rat
Host	Mouse
Isotype	Mouse IgG1, κ
Clone No.	OX-33
Isotype Control	FITC Mouse IgG1, κ Isotype Control[MOPC-21] [Product E-AB-F09792C]
Conjugation	FITC
Conjugation Information	FITC is designed to be excited by the Blue laser (488 nm) and detected using an optical filter centered near 530 nm (e.g., a 525/40 nm bandpass filter).
Storage Buffer	Phosphate buffered solution, pH 7.2, containing 0.09% stabilizer and 1% protein protectant.

Applications

Recommended usage

FCM	Each lot of this antibody is quality control tested by flow cytometric analysis. The amount of the reagent is suggested to be used 5 μL of antibody per test (million cells in 100 μL staining volume or per 100 μL of whole blood). Please check your vial before the experiment. Since applications vary, the appropriate dilutions must be determined for individual use.
------------	--

Data



Rat splenocytes are stained with FITC Anti-Rat CD45RA Antibody (filled gray histogram) or FITC Mouse IgG1, κ Isotype Control (empty black histogram).

Preparation & Storage

Storage	Keep as concentrated solution. This product can be stored at 2-8°C for 12 months. Please protected from prolonged exposure to light and do not freeze.
Shipping	Ice bag

Antigen Information

Alternate Names	high molecular weight form;Leukocyte common antigen
Gene ID	24699

For Research Use Only

Background

CD45 is a protein tyrosine phosphatase with multiple isoforms differing as a result of alternative splicing of the extracellular domain and glycosylation. CD45 is expressed on all hematopoietic cells except erythrocytes and platelets. CD45RA is one of the CD45 isoforms with a molecular weight of 200-220 kD. It is expressed almost exclusively on B cells. CD45 functions in signal transduction through T and B cell antigen receptors. CD45 has been shown to interact with various proteins, including galectin-1, CD2, CD3, and CD4.

For Research Use Only