

Recombinant Human ISG15/G1P2 Protein (mature form)



Catalog Number:PKSH030785

Note: Centrifuge before opening to ensure complete recovery of vial contents.

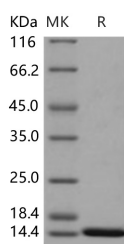
Description

| | |
|------------------------------------|--------------------------------------------------------------------------------------------------------------------------------------------------------------|
| Synonyms | Ubiquitin-Like Protein ISG15;Interferon-Induced 15 kDa Protein;Interferon-Induced 17 kDa Protein;IP17;Ubiquitin Cross-Reactive Protein;hUCRP;ISG15;G1P2;UCRP |
| Species | Human |
| Expression Host | E.coli |
| Sequence | Met 1-Gly 157 |
| Accession | AAH09507.1 |
| Calculated Molecular Weight | 17.2 kDa |
| Observed molecular weight | 15 kDa |
| Tag | None |

Properties

| | |
|-----------------------|---------------------------------------------------------------------------------------------------------------------------------------------------------------------------------------------------------------------------------------|
| Purity | > 95 % as determined by reducing SDS-PAGE. |
| Endotoxin | Please contact us for more information. |
| Storage | Generally, lyophilized proteins are stable for up to 12 months when stored at -20 to -80°C. Reconstituted protein solution can be stored at 4-8°C for 2-7 days. Aliquots of reconstituted samples are stable at < -20°C for 3 months. |
| Shipping | This product is provided as lyophilized powder which is shipped with ice packs. |
| Formulation | Lyophilized from sterile 50mM Tris, pH 8.0 Normally 5 % - 8 % trehalose, mannitol and 0.01% Tween80 are added as protectants before lyophilization. Please refer to the specific buffer information in the printed manual. |
| Reconstitution | Please refer to the printed manual for detailed information. |

Data



> 95 % as determined by reducing SDS-PAGE.

Background

Interferon-induced 17 kDa protein (ISG15), a 15-kDa protein of unique primary amino acid sequence, functions intracellularly as an ubiquitin homologue and a cytokine that induces production of IFN-gamma and augments NK / lymphokine-activated killer cell proliferation and function. ISG15 is secreted from monocytes and lymphocytes. ISG15 is an ubiquitin-like molecule that is strongly upregulated by type I interferons as a primary response to diverse microbial and cellular stress stimuli. Alterations in the ISG15 signalling pathway have also been found in several human tumour entities. In addition to being stimulated by type I interferon, expression of ISG15 is greatly induced by viral or bacterial infection

For Research Use Only

A Reliable Research Partner in Life Science and Medicine

Toll-free: 1-888-852-8623

Web: www.elabscience.com

Tel: 1-832-243-6086

Email: techsupport@elabscience.com

Fax: 1-832-243-6017

Recombinant Human ISG15/G1P2 Protein (mature form)



Catalog Number:PKSH030785

through the Janus kinase / signal transducer and activator of transcription (Jak / STAT) signalling pathway. After induction, ISG15 is secreted by monocytes, B- and T-lymphocytes and fibroblasts. We demonstrate the novel way in which the function of the ISG15 protein is inhibited by influenza B virus, which strongly induces the ISG15 protein: a specific region of the influenza B virus NS1 protein, which includes part of its effector domain, blocks the covalent linkage of ISG15 to its target proteins both in vitro and in infected cells.

For Research Use Only

A Reliable Research Partner in Life Science and Medicine

Toll-free: 1-888-852-8623

Tel: 1-832-243-6086

Fax: 1-832-243-6017

Web: www.elabscience.com

Email: techsupport@elabscience.com