

MBL2 Polyclonal Antibody

Catalog Number: E-AB-19517



Note: Centrifuge before opening to ensure complete recovery of vial contents.

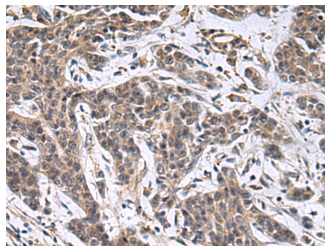
Description

Reactivity	Human, Rat
Immunogen	Synthetic peptide of human MBL2
Host	Rabbit
Isotype	IgG
Purification	Antigen affinity purification
Conjugation	Unconjugated
Formulation	PBS with 0.05% NaN ₃ and 40% Glycerol, pH7.4

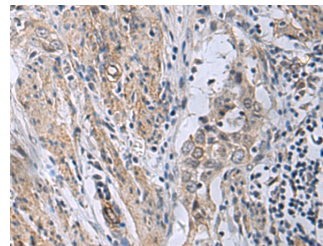
Applications Recommended Dilution

IHC	1:50-1:100
ELISA	1:5000-1:10000

Data



Immunohistochemistry of paraffin-embedded Human colorectal cancer tissue using MBL2 Polyclonal Antibody at dilution of 1:25 (x200)



Immunohistochemistry of paraffin-embedded Human esophagus cancer tissue using MBL2 Polyclonal Antibody at dilution of 1:25 (x200)

Preparation & Storage

Storage Store at -20°C. Avoid freeze / thaw cycles.

Background

MBL2 (Mannose Binding Lectin 2) is a Protein Coding gene. Diseases associated with MBL2 include Chronic Infections, Due To Mbl Deficiency and Pulmonary Tuberculosis. Among its related pathways are Complement Pathway and Innate Immune System. GO annotations related to this gene include calcium ion binding and calcium-dependent protein binding. An important paralog of this gene is SFTPD. This gene encodes the soluble mannose-binding lectin or mannose-binding protein found in serum. The protein encoded belongs to the collectin family and is an important element in the innate immune system. The protein recognizes mannose and N-acetylglucosamine on many microorganisms, and is capable of activating the classical complement pathway. Deficiencies of this gene have been associated with susceptibility to autoimmune and infectious diseases.

For Research Use Only

A Reliable Research Partner in Life Science and Medicine

Toll-free: 1-888-852-8623

Web: www.elabscience.com

Tel: 1-832-243-6086

Email: techsupport@elabscience.com

Fax: 1-832-243-6017