

Recombinant CTGF Monoclonal Antibody

catalog number: **AN301048L**

Note: Centrifuge before opening to ensure complete recovery of vial contents.

Description

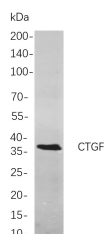
Reactivity	Human;Mouse;Rat
Immunogen	Recombinant Human CTGF protein
Host	Rabbit
Isotype	IgG,k
Clone	7F11
Purification	Protein A
Buffer	PBS, 50% glycerol, 0.05% Proclin 300, 0.05% protein protectant.

Applications

Recommended Dilution

WB	1:500-2000
-----------	------------

Data



Western Blot with Recombinant CTGF Monoclonal Antibody
at dilution of 1:1000 dilution. Lane A: U-14 cells.

Observed-MW:38 kDa

Calculated-MW:38 kDa

Preparation & Storage

Storage	Store at -20°C Valid for 12 months. Avoid freeze / thaw cycles.
Shipping	Ice bag

Background

The protein encoded by this gene is a mitogen that is secreted by vascular endothelial cells. The encoded protein plays a role in chondrocyte proliferation and differentiation, cell adhesion in many cell types, and is related to platelet-derived growth factor. Certain polymorphisms in this gene have been linked with a higher incidence of systemic sclerosis.

For Research Use Only