

Recombinant Human UBE2R2/UBC3B Protein (His Tag)

Catalog Number: PKSH033188

Note: Centrifuge before opening to ensure complete recovery of vial contents.

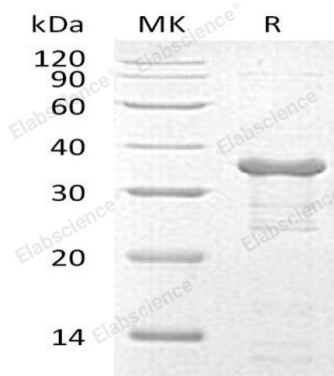
Description

Species	Human
Source	E.coli-derived Human UBE2R2/UBC3B protein Met 1-Ser238, with an N-terminal His
Calculated MW	29.3 kDa
Observed MW	37 kDa
Accession	Q712K3
Bio-activity	Not validated for activity

Properties

Purity	> 90 % as determined by reducing SDS-PAGE.
Concentration	Subject to label value.
Endotoxin	< 1.0 EU per µg of the protein as determined by the LAL method.
Storage	Store at < -20°C, stable for 6 months. Please minimize freeze-thaw cycles.
Shipping	This product is provided as liquid. It is shipped at frozen temperature with blue ice/gel packs. Upon receipt, store it immediately at < - 20°C.
Formulation	Supplied as a 0.2 µm filtered solution of 50mM HEPES, 150mM NaCl, pH 7.5.

Data



> 90 % as determined by reducing SDS-PAGE.

Background

Ubiquitin-Conjugating Enzyme E2 R2 (UBE2R2) is a modification enzyme that belongs to the ubiquitin-conjugating enzyme family. UBE2R2 is involved in cell growth and transformation. It accepts ubiquitin from the E1 complex and catalyzes its covalent attachment to other proteins. In vitro, UBE2R2 catalyzes monoubiquitination and 'Lys-48'-linked polyubiquitination. It may be involved in degradation of katenin.