

Recombinant Human MORF4L2/MRGX Protein (His Tag)



Catalog Number: PKSH032761

Note: Centrifuge before opening to ensure complete recovery of vial contents.

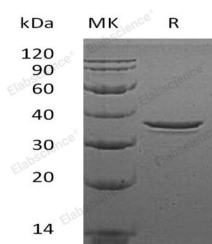
Description

Synonyms	Mortality Factor 4-Like Protein 2;MORF-Related Gene X Protein;Protein MSL3-2;Transcription Factor-Like Protein MRGX;MORF4L2;KIAA0026;MRGX
Species	Human
Expression Host	E.coli
Sequence	Met 1-Leu288
Accession	Q15014
Calculated Molecular Weight	33.4 kDa
Observed molecular weight	36 kDa
Tag	C-His

Properties

Purity	> 95 % as determined by reducing SDS-PAGE.
Endotoxin	< 1.0 EU per µg of the protein as determined by the LAL method.
Storage	Generally, lyophilized proteins are stable for up to 12 months when stored at -20 to -80°C. Reconstituted protein solution can be stored at 4-8°C for 2-7 days. Aliquots of reconstituted samples are stable at < -20°C for 3 months.
Shipping	This product is provided as lyophilized powder which is shipped with ice packs.
Formulation	Lyophilized from a 0.2 µm filtered solution of PBS, pH 7.4. Normally 5 % - 8 % trehalose, mannitol and 0.01 % Tween80 are added as protectants before lyophilization. Please refer to the specific buffer information in the printed manual.
Reconstitution	Please refer to the printed manual for detailed information.

Data



> 95 % as determined by reducing SDS-PAGE.

Background

Mortality Factor 4-Like Protein 2 (MORF4L2) is a member of the mortality factor (MORF) family. MORF4L2 localizes in the nucleus, possessing a protein kinase C phosphorylation site and a tyrosine phosphorylation site. MORF4L2 interacts with the Rb tumor suppressor and it has histone deacetylase activity which can either repress or promote the activity of the B-Myb promoter depending on the tissue. In addition, MORF4L2 is involved in cell growth, regulation, and senescence.

For Research Use Only

A Reliable Research Partner in Life Science and Medicine

Toll-free: 1-888-852-8623

Web: www.elabscience.com

Tel: 1-832-243-6086

Email: techsupport@elabscience.com

Fax: 1-832-243-6017