

Recombinant Mouse SerpinE2/SERPINE2 Protein (His Tag)

Catalog Number: PKSM041335



Note: Centrifuge before opening to ensure complete recovery of vial contents.

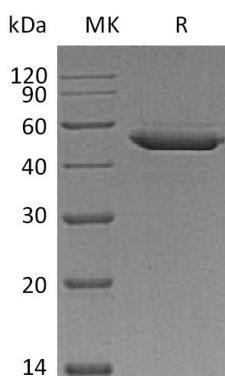
Description

Species	Mouse
Mol_Mass	43.2 kDa
Accession	Q07235
Bio-activity	Not validated for activity

Properties

Purity	> 95 % as determined by reducing SDS-PAGE.
Endotoxin	< 1.0 EU per μg of the protein as determined by the LAL method.
Storage	Store at $< -20^{\circ}\text{C}$, stable for 6 months. Please minimize freeze-thaw cycles.
Shipping	This product is provided as liquid. It is shipped at frozen temperature with blue ice/gel packs. Upon receipt, store it immediately at $< -20^{\circ}\text{C}$.
Formulation	Supplied as a 0.2 μm filtered solution of 20mM Sodium Acetate, 150 mM NaCl, 5% Trehalose, 5% Mannitol, 0.02% Tween 80, 1mM EDTA, pH 4.0.
Reconstitution	Not Applicable

Data



Background

Serpin E2 is a member of the Serpin superfamily of the serine protease inhibitors. Serpin E2 is a potent inhibitor of thrombin, plasmin, and plasminogen activators. It is differentially expressed during neuronal differentiation and is able to transform human embryonic kidney cells into neuron-like cells. Its over-expression in mice leads to progressive neuronal and motor dysfunction in these animals. It is also over-expressed in the majority of pancreatic carcinoma as well as gastric and colorectal cancer samples whereas it is weakly expressed in all normal pancreas and chronic pancreatitis tissue samples. It plays an important role in controlling male fertility because its knockout male mice show a marked impairment in fertility from the onset of sexual maturity and its abnormal expression is found in the semen of men with seminal dysfunction.

For Research Use Only

A Reliable Research Partner in Life Science and Medicine
Tel: 400-999-2100

Email: techsupport@elabscience.cn

Web: www.elabscience.cn

Rev. V3.2