

# (KO Validated) SCD Polyclonal Antibody

catalog number: E-AB-66816

**Note:** Centrifuge before opening to ensure complete recovery of vial contents.

## Description

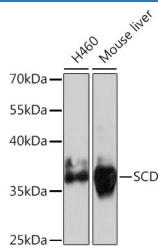
<b>Reactivity</b>	Human;Mouse;Rat
<b>Immunogen</b>	A synthetic peptide of human SCD (NP_005054.3).
<b>Host</b>	Rabbit
<b>Isotype</b>	IgG
<b>Purification</b>	Affinity purification
<b>Conjugation</b>	Unconjugated
<b>buffer</b>	Phosphate buffered solution, pH 7.4, containing 0.05% stabilizer and 50% glycerol.

## Applications

## Recommended Dilution

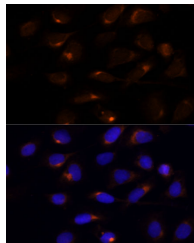
<b>WB</b>	1:500-1:2000
<b>IF</b>	1:50-1:100

## Data

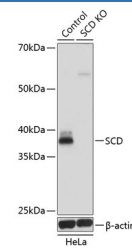


Western blot analysis of extracts of various cell lines using SCD Polyclonal Antibody at dilution of 1:1000.

**Observed-MV:38 kDa**  
**Calculated-MV:41 kDa**



Immunofluorescence analysis of U-2 OS cells using SCD Polyclonal Antibody at dilution of 1:100 (40x lens). Blue: DAPI for nuclear staining.



Western blot analysis of extracts from normal (control) and SCD knockout (KO) HeLa cells using SCD Polyclonal Antibody at dilution of 1:1000.

**Observed-MV:38 kDa**  
**Calculated-MV:41 kDa**

## Preparation & Storage

<b>Storage</b>	Store at -20°C Valid for 12 months. Avoid freeze / thaw cycles.
<b>Shipping</b>	The product is shipped with ice pack, upon receipt, store it immediately at the temperature recommended.

## Background

## For Research Use Only

## (KO Validated) SCD Polyclonal Antibody

catalog number: E-AB-66816



This gene encodes an enzyme involved in fatty acid biosynthesis, primarily the synthesis of oleic acid. The protein belongs to the fatty acid desaturase family and is an integral membrane protein located in the endoplasmic reticulum. Transcripts of approximately 3.9 and 5.2 kb, differing only by alternative polyadenylation signals, have been detected. A gene encoding a similar enzyme is located on chromosome 4 and a pseudogene of this gene is located on chromosome 17.

### For Research Use Only

A Reliable Research Partner in Life Science and Medicine  
Tel: 400-999-2100

Email: [techsupport@elabscience.cn](mailto:techsupport@elabscience.cn)

Web: [www.elabscience.cn](http://www.elabscience.cn)

Rev. V1.7