

BrdU Monoclonal Antibody

catalog number: AN005390L

Note: Centrifuge before opening to ensure complete recovery of vial contents.

Description

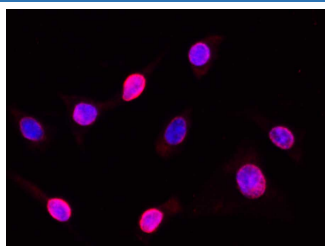
| | |
|---------------------|--|
| Reactivity | All |
| Immunogen | Synthetic peptide corresponding to human BrdU protein |
| Host | Mouse |
| Isotype | IgG2a |
| Clone | 9C3 |
| Purification | Protein A/G Purification |
| Conjugation | Unconjugated |
| buffer | PBS with 0.05% proclin 300, 1% protective protein and 50% glycerol,pH7.4 |

Applications

Recommended Dilution

| | |
|-----------|-------------|
| IF | 1:200-1:400 |
|-----------|-------------|

Data



Immunofluorescence analysis of C6 cells incorporated with BrdU using BrdU Monoclonal Antibody at dilution of 1:100.

Preparation & Storage

| | |
|-----------------|--|
| Storage | Store at -20°C Valid for 12 months. Avoid freeze / thaw cycles. |
| Shipping | The product is shipped with ice pack, upon receipt, store it immediately at the temperature recommended. |

Background

5-Bromo-2'-deoxyuridine (bromodeoxyuridine (BrdU)), a modified nucleotide and analog of thymidine, is commonly used for detecting proliferating cells. For detection, an anti-BrdU antibody (probe) with a fluorescent dye is applied to bind the BrdU label after DNA denaturation.

For Research Use Only