

SLC2A5 Polyclonal Antibody

catalog number: **E-AB-66119**

Note: Centrifuge before opening to ensure complete recovery of vial contents.

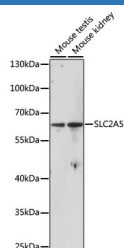
Description

Reactivity	Human;Mouse
Immunogen	A synthetic peptide of human SLC2A5 (NP_003030.1).
Host	Rabbit
Isotype	IgG
Purification	Affinity purification
Buffer	Phosphate buffered solution, pH 7.4, containing 0.05% stabilizer and 50% glycerol.

Applications Recommended Dilution

WB	1:200-1:2000
-----------	--------------

Data



Western blot analysis of extracts of various cell lines using SLC2A5 Polyclonal Antibody at dilution of 1:1000.

Observed-MW:65 kDa

Calculated-MW:26 kDa/54 kDa

Preparation & Storage

Storage	Store at -20°C Valid for 12 months. Avoid freeze / thaw cycles.
Shipping	The product is shipped with ice pack, upon receipt, store it immediately at the temperature recommended.

Background

The protein encoded by this gene is a fructose transporter responsible for fructose uptake by the small intestine. The encoded protein also is necessary for the increase in blood pressure due to high dietary fructose consumption.

For Research Use Only