

## Recombinant Human G-CSF/CSF3 Protein

Catalog Number: PDEH100739

**Note:** Centrifuge before opening to ensure complete recovery of vial contents.

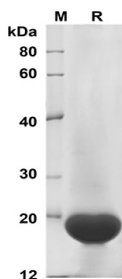
### Description

Species	Human
Source	E.coli-derived Human G-CSF protein Ala30-Pro204, with an N-terminal His
Calculated MW	18.7 kDa
Observed MW	19 kDa
Accession	P09919
Bio-activity	Not validated for activity

### Properties

Purity	> 95% as determined by reducing SDS-PAGE.
Endotoxin	< 10 EU/mg of the protein as determined by the LAL method
Storage	Generally, lyophilized proteins are stable for up to 12 months when stored at -20 to -80 °C. Reconstituted protein solution can be stored at 4-8°C for 2-7 days. Aliquots of reconstituted samples are stable at < -20°C for 3 months.
Shipping	This product is provided as lyophilized powder which is shipped with ice packs.
Formulation	Lyophilized from a 0.2 µm filtered solution in PBS with 5% Trehalose and 5% Mannitol.
Reconstitution	It is recommended that sterile water be added to the vial to prepare a stock solution of 0.5 mg/mL. Concentration is measured by UV-Vis.

### Data



SDS-PAGE analysis of Human G-CSF/CSF3 proteins,  
2µg/lane of Recombinant Human G-CSF/CSF3 proteins was  
resolved with SDS-PAGE under reducing conditions,  
showing bands at 19 KD.

### Background

Granulocyte/macrophage colony-stimulating factors are cytokines that act in hematopoiesis by controlling the production, differentiation, and function of 2 related white cell populations of the blood, the granulocytes and the monocytes-macrophages. This CSF induces granulocytes.

### For Research Use Only