

Recombinant Human SERPINB1/PI2 Protein (Human Cells, His Tag)



Catalog Number:PKSH032695

Note: Centrifuge before opening to ensure complete recovery of vial contents.

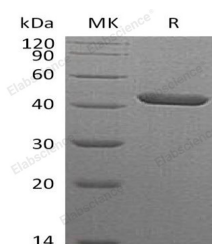
Description

| | |
|------------------------------------|--|
| Synonyms | Leukocyte elastase inhibitor;SERPINB1;Monocyte/neutrophil elastase inhibitor;M/NEI;Peptidase inhibitor 2;PI-2;PI2;EI;ELANH2;HEL-S-27;HEL57;LEI;MNEI; |
| Species | Human |
| Expression Host | HEK293 Cells |
| Sequence | Met 1-Pro379 |
| Accession | P30740 |
| Calculated Molecular Weight | 43.8 kDa |
| Observed molecular weight | 40-56 kDa |
| Tag | C-His |

Properties

| | |
|-----------------------|--|
| Purity | > 95 % as determined by reducing SDS-PAGE. |
| Endotoxin | < 1.0 EU per µg of the protein as determined by the LAL method. |
| Storage | Generally, lyophilized proteins are stable for up to 12 months when stored at -20 to -80°C. Reconstituted protein solution can be stored at 4-8°C for 2-7 days. Aliquots of reconstituted samples are stable at < -20°C for 3 months. |
| Shipping | This product is provided as lyophilized powder which is shipped with ice packs. |
| Formulation | Lyophilized from a 0.2 µm filtered solution of 20mM PB, 150mM NaCl, pH 7.4. Normally 5 % - 8 % trehalose, mannitol and 0.01% Tween80 are added as protectants before lyophilization. Please refer to the specific buffer information in the printed man |
| Reconstitution | Please refer to the printed manual for detailed information. |

Data



> 95 % as determined by reducing SDS-PAGE.

Background

SERPINB1 is a member of the serpin family and Ov-serpin subfamily. As protease inhibitors; serpins have an array of functions including regulating blood coagulation; fibrinolysis; the complement pathway; angiogenesis; inflammation; tumor suppression; extracellular matrix remodeling; and cell motility. SERPINB1 regulates the activity of the neutrophil proteases elastase; cathepsin G; proteinase-3; chymase; chymotrypsin; and kallikrein-3. Reactive bond 1 of SerpinB1 is specific for reaction with chymotrypsin-like protease such as cathepsin G; chymotrypsin or chymase. Reactive bond 2 of SerpinB1 is specific for reaction with elastase-like protease such as neutrophil elastase; proteinase-3; pancreatic elastase

For Research Use Only

A Reliable Research Partner in Life Science and Medicine

Toll-free: 1-888-852-8623

Web: www.elabscience.com

Tel: 1-832-243-6086

Email: techsupport@elabscience.com

Fax: 1-832-243-6017

Recombinant Human SERPINB1/PI2 Protein (Human Cells, His Tag)



Catalog Number:PKSH032695

or PSA. In addition; SERPINB1 also functions as a potent intracellular inhibitor of granzyme H.

For Research Use Only

A Reliable Research Partner in Life Science and Medicine

Toll-free: 1-888-852-8623

Tel: 1-832-243-6086

Fax: 1-832-243-6017

Web: www.elabscience.com

Email: techsupport@elabscience.com