

COL3A1 Polyclonal Antibody

catalog number: E-AB-70009

Note: Centrifuge before opening to ensure complete recovery of vial contents.

Description

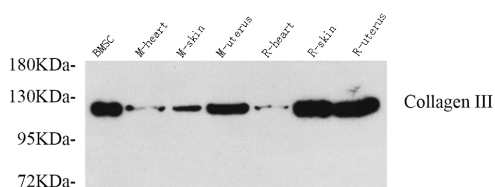
| | |
|---------------------|---|
| Reactivity | Mouse;Rat |
| Immunogen | KLH conjugated Synthetic peptide corresponding to Mouse COL3A1 |
| Host | Rabbit |
| Isotype | IgG |
| Purification | Affinity purification |
| Conjugation | Unconjugated |
| buffer | Phosphate buffered solution, pH 7.4, containing 0.05% stabilizer, 1% protein protectant and 50% glycerol. |

Applications

Recommended Dilution

| | |
|-----------|--------------|
| WB | 1:500-1:2000 |
|-----------|--------------|

Data



Western Blot analysis of various samples using COL3A1

Polyclonal Antibody at dilution of 1:750.

Observed-MV:120 kDa

Calculated-MV:142 kDa

Preparation & Storage

| | |
|-----------------|--|
| Storage | Store at -20°C Valid for 12 months. Avoid freeze / thaw cycles. |
| Shipping | The product is shipped with ice pack, upon receipt, store it immediately at the temperature recommended. |

Background

This gene encodes the pro- $\alpha 1$ chains of type III collagen, a fibrillar collagen that is found in extensible connective tissues such as skin, lung, uterus, intestine and the vascular system, frequently in association with type I collagen.

Mutations in this gene are associated with Ehlers-Danlos syndrome types IV, and with aortic and arterial aneurysms.

Two transcripts, resulting from the use of alternate polyadenylation signals, have been identified for this gene.

For Research Use Only