

# Recombinant Human/Mouse FGF-8b/FGF8B Protein

Catalog Number: PKSH033805



**Note:** Centrifuge before opening to ensure complete recovery of vial contents.

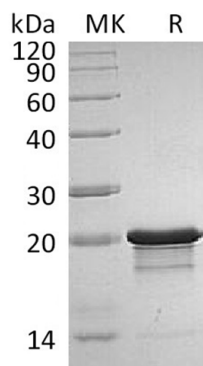
## Description

<b>Species</b>	Human/Mouse
<b>Mol_Mass</b>	22.5 kDa
<b>Accession</b>	P55075-3/P37237-2
<b>Bio-activity</b>	Measured in a cell proliferation assay using BALB/c 3T3 cells. The ED <sub>50</sub> for this effect is 21.87 ng/ml.

## Properties

<b>Purity</b>	> 95 % as determined by reducing SDS-PAGE.
<b>Endotoxin</b>	< 0.01 EU per µg of the protein as determined by the LAL method.
<b>Storage</b>	Generally, lyophilized proteins are stable for up to 12 months when stored at -20 to -80 °C. Reconstituted protein solution can be stored at 4-8°C for 2-7 days. Aliquots of reconstituted samples are stable at < -20°C for 3 months.
<b>Shipping</b>	This product is provided as lyophilized powder which is shipped with ice packs.
<b>Formulation</b>	Lyophilized from a 0.2 µm filtered solution of 20mM PB,300mM NaCl,2% Sucrose, 0.02% Tween 80,pH7.4. Normally 5% - 8% trehalose, mannitol and 0.01% Tween 80 are added as protectants before lyophilization. Please refer to the specific buffer information in the printed manual.
<b>Reconstitution</b>	Please refer to the printed manual for detailed information.

## Data



> 95 % as determined by reducing SDS-PAGE.

## Background

Fibroblast growth factor 8 (FGF-8) is a member of the fibroblast growth factor family. It is discovered as a growth factor essential for the androgen-dependent growth of mouse mammary carcinoma cells. Mouse FGF-8b shares 100% aa identity with human FGF-8b. FGF-8 is widely expressed during embryogenesis, and mediates epithelial-mesenchymal transitions. It plays an important role in the regulation of embryonic development, cell proliferation, cell differentiation and cell migration. It is required for normal brain, eye, ear, limb development during embryogenesis and normal development of the gonadotropin-releasing hormone (GnRH) neuronal system.

## For Research Use Only

A Reliable Research Partner in Life Science and Medicine  
Tel:400-999-2100

Email:[techsupport@elabscience.cn](mailto:techsupport@elabscience.cn)

Web:[www.elabscience.cn](http://www.elabscience.cn)

Rev. V3.5