

## Recombinant Human CLEC4D/CLECSF8 Protein (His Tag)

**Catalog Number:** PKSH031110

**Note:** Centrifuge before opening to ensure complete recovery of vial contents.

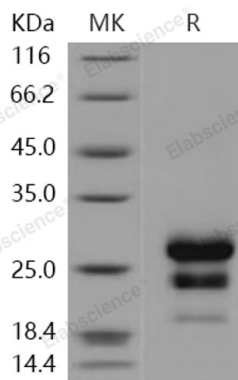
### Description

|                      |  |
|----------------------|--|
| <b>Species</b>       | Human  |
| <b>Source</b>        | HEK293 Cells-derived Human CLEC4D/CLECSF8 protein Gly 52-Asn 215, with an N-terminal His |
| <b>Calculated MW</b> | 21.2 kDa   |
| <b>Observed MW</b>   | 21-27 kDa  |
| <b>Accession</b>     | NP_525126.2  |
| <b>Bio-activity</b>  | Not validated for activity   |

### Properties

|                       |   |
|-----------------------|---|
| <b>Purity</b>         | > 92 % as determined by reducing SDS-PAGE.  |
| <b>Endotoxin</b>      | < 1.0 EU per µg of the protein as determined by the LAL method.   |
| <b>Storage</b>        | Generally, lyophilized proteins are stable for up to 12 months when stored at -20 to -80°C. Reconstituted protein solution can be stored at 4-8°C for 2-7 days. Aliquots of reconstituted samples are stable at < -20°C for 3 months. |
| <b>Shipping</b>       | This product is provided as lyophilized powder which is shipped with ice packs.   |
| <b>Formulation</b>    | Lyophilized from sterile PBS, pH 7.4<br>Normally 5% - 8% trehalose, mannitol and 0.01% Tween 80 are added as protectants before lyophilization.<br>Please refer to the specific buffer information in the printed manual.             |
| <b>Reconstitution</b> | Please refer to the printed manual for detailed information.  |

### Data



> 92 % as determined by reducing SDS-PAGE.

### Background

C-type lectin (CLEC) family is a type of carbohydrate-binding protein domain named lectin. C-type lectins are the most diverse and prevalent lectin family in immunity with its requirement for calcium for binding. Proteins including a C-type lectin domain have diverse range of functions including cell-cell adhesion, immune response to pathogens and apoptosis. There are at least 14 types of C-type lectins: type I to type X IV. CLEC4D(CLECSF8) is a type II membrane glycoprotein belonging to the C-type lectin family, with restricted expression in the monocyte/macrophage lineage. It plays important roles in the function of macrophages.

### For Research Use Only