

CD38 Polyclonal Antibody

catalog number: E-AB-40435

Note: Centrifuge before opening to ensure complete recovery of vial contents.

Description

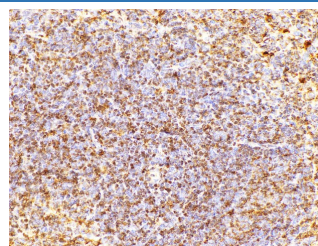
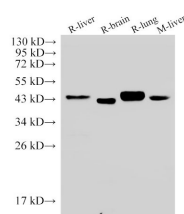
Reactivity	Mouse;Rat
Immunogen	Recombinant Mouse ADP-ribosyl cyclase/cyclic ADP-ribose hydrolase 1 protein
Host	Rabbit
Isotype	IgG
Purification	Antigen Affinity Purification
Conjugation	Unconjugated
buffer	PBS with 0.05% proclin 300, 1% protective protein and 50% glycerol,pH7.4

Applications

Recommended Dilution

WB	1:500-1:2000
IHC	1:50-1:200

Data



Western Blot analysis of 1)Rat liver, 2)Rat brain, 3)Rat lung, 4)Mouse liver using CD38 Polyclonal Antibody at dilution of 1:500

Immunohistochemistry of paraffin-embedded Mouse spleen using CD38 Polyclonal Antibody at dilution of 1:200

Observed-MV:45 kDa

Calculated-MV:34 kDa

Preparation & Storage

Storage	Store at -20°C Valid for 12 months. Avoid freeze / thaw cycles.
Shipping	The product is shipped with ice pack,upon receipt,store it immediately at the temperature recommended.

Background

CD38(cluster of differentiation38), also known as cyclic ADP ribose hydrolase is a glycoprotein found on the surface of many immune cells (white blood cells), including CD4+, CD8+, B lymphocytes and natural killer cells. CD38 also functions in cell adhesion, signal transduction and calcium signaling. In humans, the CD38 protein is encoded by the CD38 gene which is located on chromosome 4.

For Research Use Only