

Recombinant Human ATG4A Protein (His Tag)

Catalog Number: PKSH032099

Note: Centrifuge before opening to ensure complete recovery of vial contents.

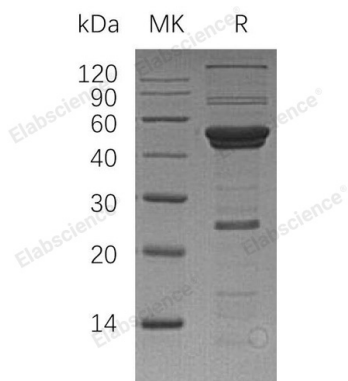
Description

| | |
|---------------------|----------------------------|
| Species | Human |
| Mol_Mass | 47.5 kDa |
| Accession | Q8WYN0 |
| Bio-activity | Not validated for activity |

Properties

| | |
|-----------------------|--|
| Purity | > 80 % as determined by reducing SDS-PAGE. |
| Endotoxin | < 1.0 EU per µg of the protein as determined by the LAL method. |
| Storage | Store at < -20°C, stable for 6 months. Please minimize freeze-thaw cycles. |
| Shipping | This product is provided as liquid. It is shipped at frozen temperature with blue ice/gel packs. Upon receipt, store it immediately at < - 20°C. |
| Formulation | Supplied as a 0.2 µm filtered solution of PBS, pH7.4. |
| Reconstitution | Not Applicable |

Data



> 80 % as determined by reducing SDS-PAGE.

Background

Cysteine Protease ATG4A (ATG4A) is a cytoplasmic protein that belongs to the peptidase C54 family. ATG4A is widely expressed in many tissues at a low level, but the highest expression is observed in skeletal muscle and brain. ATG4A is a cysteine protease required for autophagy; it cleaves the C-terminal part of MAP1LC3, GABARAPL2 or GABARAP. ATG4A is inhibited by N-ethylmaleimide. It is suggested that ATG4A has a significant role in suppressing various cancers.

For Research Use Only