

BRS3 Polyclonal Antibody

Catalog Number: E-AB-16286

Note: Centrifuge before opening to ensure complete recovery of vial contents.

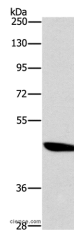
Description

Reactivity	Human, Mouse, Rat
Immunogen	Synthetic peptide of human BRS3
Host	Rabbit
Isotype	IgG
Purification	Affinity purification
Conjugation	Unconjugated
Formulation	PBS with 0.05% sodium azide and 50% glycerol, PH7.4

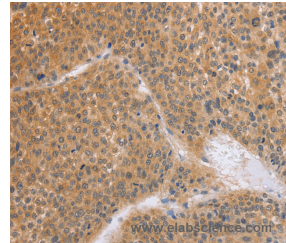
Applications Recommended Dilution

WB	1:500-1:2000
IHC	1:50-1:200

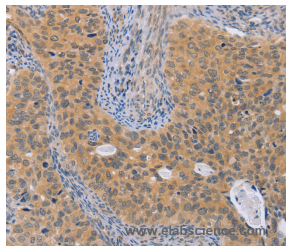
Data



Western Blot analysis of A172 cell using BRS3 Polyclonal Antibody at dilution of 1:500
Calculated Mw:44kDa



Immunohistochemistry of paraffin-embedded Human liver cancer using BRS3 Polyclonal Antibody at dilution of 1:50



Immunohistochemistry of paraffin-embedded Human cervical cancer using BRS3 Polyclonal Antibody at dilution of 1:50

Preparation & Storage

Storage Store at -20°C. Avoid freeze / thaw cycles.

Background

The protein encoded by this gene is a G protein-coupled membrane receptor that binds bombesin-like peptides. This binding results in activation of a phosphatidylinositol-calcium second messenger system, with physiological effects including regulation of metabolic rate, glucose metabolism, and hypertension.

For Research Use Only

A Reliable Research Partner in Life Science and Medicine

Toll-free: 1-888-852-8623

Web: www.elabscience.com

Tel: 1-832-243-6086

Email: techsupport@elabscience.com

Fax: 1-832-243-6017