

Recombinant Human CLIC1 Protein (His Tag)

Catalog Number:PKSH032246



Note: Centrifuge before opening to ensure complete recovery of vial contents.

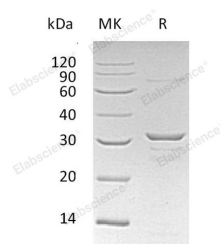
Description

Synonyms	Chloride Intracellular Channel Protein 1;Chloride Channel ABP;Nuclear Chloride Ion Channel 27;NCC27;Regulatory Nuclear Chloride Ion Channel Protein;hRNCC;CLIC1;G6;NCC27
Species	Human
Expression Host	E.coli
Sequence	Met 1-Lys241
Accession	O00299
Calculated Molecular Weight	29.0 kDa
Observed molecular weight	30-35 kDa
Tag	N-His

Properties

Purity	> 90 % as determined by reducing SDS-PAGE.
Endotoxin	< 1.0 EU per µg of the protein as determined by the LAL method.
Storage	Generally, lyophilized proteins are stable for up to 12 months when stored at -20 to -80°C. Reconstituted protein solution can be stored at 4-8°C for 2-7 days. Aliquots of reconstituted samples are stable at < -20°C for 3 months.
Shipping	This product is provided as lyophilized powder which is shipped with ice packs.
Formulation	Lyophilized from a 0.2 µm filtered solution of 20mM Tris-HCl, 100mM NaCl, pH 8.0. Normally 5 % - 8 % trehalose, mannitol and 0.01% Tween80 are added as protectants before lyophilization. Please refer to the specific buffer information in the print
Reconstitution	Please refer to the printed manual for detailed information.

Data



> 90 % as determined by reducing SDS-PAGE.

Background

Chloride Intracellular Channel Protein 1 (CLIC1) belongs to the Chloride Channel CLIC family and contains one GST C-terminal domain. CLIC1 can be expressed in various cell types, but it is especially prominent in the heart, placenta, liver, kidney, and pancreas. CLIC1 can insert into membranes and form chloride ion channels. The channel activity depends on the pH. CLIC1 membrane insertion seems to be redox-regulated and may occur only under oxydizing conditions. CLIC1 is also involved in the regulation of the cell cycle.

For Research Use Only

A Reliable Research Partner in Life Science and Medicine

Toll-free: 1-888-852-8623

Web: www.elabscience.com

Tel: 1-832-243-6086

Email: techsupport@elabscience.com

Fax: 1-832-243-6017