

# Luciferase Monoclonal Antibody

catalog number: E-AB-22134

**Note:** Centrifuge before opening to ensure complete recovery of vial contents.

## Description

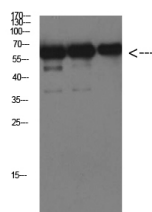
<b>Reactivity</b>	Firefly
<b>Immunogen</b>	Recombinant Protein of Luciferase of Luciferase
<b>Host</b>	Mouse
<b>Isotype</b>	IgG
<b>Clone</b>	2C2
<b>Purification</b>	Protein A purification
<b>Conjugation</b>	Unconjugated
<b>buffer</b>	Phosphate buffered solution, pH 7.4, containing 0.05% stabilizer, 0.5% protein protectant and 50% glycerol.

## Applications

## Recommended Dilution

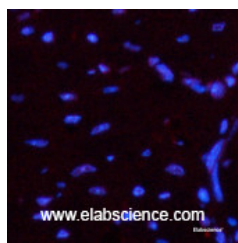
<b>WB</b>	1:1000-2000
-----------	-------------

## Data



Western Blot analysis of Luciferase protein using Luciferase Monoclonal Antibody at dilution of 1:1000.

**Observed-MV:60 kDa**



Immunofluorescence analysis of Mouse heart tissue using Luciferase Monoclonal Antibody at dilution of 1:200.

## Preparation & Storage

<b>Storage</b>	Store at -20°C Valid for 12 months. Avoid freeze / thaw cycles.
<b>Shipping</b>	The product is shipped with ice pack, upon receipt, store it immediately at the temperature recommended.

## Background

Luciferase from the firefly has become one of the more widely used reporter proteins for the study of gene expression. Luciferase catalyzes a bioluminescent reaction which requires the substrate luciferin as well as Mg<sup>2+</sup> and ATP. Mixing these reagents with the cell extract containing luciferase, results in a flash of light that decays rapidly. This light can be detected by a luminometer. The total light emission is proportional to the luciferase activity of the sample.

## For Research Use Only