

## Recombinant ZIKV (strain Zika SPH2015) Envelope protein ( His Tag)

**Catalog Number:** PKSV030266

**Note:** *Centrifuge before opening to ensure complete recovery of vial contents.*

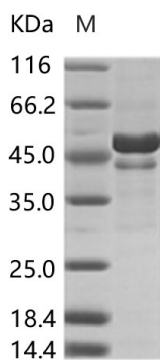
### Description

<b>Species</b>	ZIKV
<b>Source</b>	Baculovirus-Insect Cells-derived ZIKV ZIKV (strain Zika SPH2015) Envelope protein Ile291-Gly694, with an C-terminal His
<b>Calculated MW</b>	45.5 kDa.
<b>Accession</b>	ALU33341.1
<b>Bio-activity</b>	Not validated for activity

### Properties

<b>Purity</b>	> 90 % as determined by reducing SDS-PAGE.
<b>Endotoxin</b>	< 1.0 EU per µg of the protein as determined by the LAL method.
<b>Storage</b>	Generally, lyophilized proteins are stable for up to 12 months when stored at -20 to -80°C. Reconstituted protein solution can be stored at 4-8°C for 2-7 days. Aliquots of reconstituted samples are stable at < -20°C for 3 months.
<b>Shipping</b>	This product is provided as lyophilized powder which is shipped with ice packs.
<b>Formulation</b>	Lyophilized from sterile 20 mM Tris, 500 mM NaCl, pH 8.0, 10 % glycerol. Normally 5% - 8% trehalose, mannitol and 0.01% Tween 80 are added as protectants before lyophilization.
<b>Reconstitution</b>	Please refer to the specific buffer information in the printed manual.

### Data



> 90 % as determined by reducing SDS-PAGE.

### Background

Envelope of Zika virus is responsible for receptor binding and membrane. Analysis of the envelope protein of Zika, from Brazilian Zika SPH215 (KU321639), indicates predicted B and T cell epitopes in peptides that are consistent to those reported for dengue, YFYF and Japanese encephalitis. The envelope Domain II B cell epitope, to which much dengue non-neutralizing cross reaction is attributed, is also conserved also in Zika virus, consistent with prior field observations of cross reactivity with dengue and YF. Domain III of the Zika envelope protein, likely the main specific neutralizing domain, is distinct from recent Brazilian dengue isolates and a recent Peruvian YF isolate (GQ379163), 76% of possible major histocompatibility complex class (MHC) I and MHC II binding peptides and potential B cell linear epitopes are unique to Zika virus.

### For Research Use Only

Toll-free: 1-888-852-8623  
Web: [www.elabscience.com](http://www.elabscience.com)

Tel: 1-832-243-6086  
Email: [techsupport@elabscience.com](mailto:techsupport@elabscience.com)

Fax: 1-832-243-6017