

DPYSL3 Polyclonal Antibody

catalog number: E-AB-52640

Note: Centrifuge before opening to ensure complete recovery of vial contents.

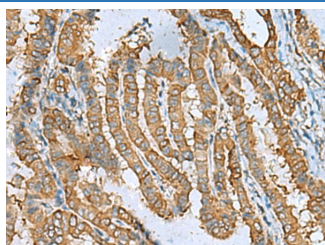
Description

Reactivity	Human;Mouse;Rat
Immunogen	Fusion protein of human DPYSL3
Host	Rabbit
Isotype	IgG
Purification	Antigen affinity purification
Conjugation	Unconjugated
buffer	Phosphate buffered solution, pH 7.4, containing 0.05% stabilizer and 50% glycerol.

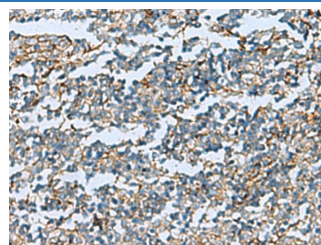
Applications

Applications	Recommended Dilution
IHC	1:50-1:200

Data



Immunohistochemistry of paraffin-embedded Human thyroid cancer tissue using DPYSL3 Polyclonal Antibody at dilution of 1:55(×200)



Immunohistochemistry of paraffin-embedded Human tonsil tissue using DPYSL3 Polyclonal Antibody at dilution of 1:55(×200)

Preparation & Storage

Storage	Store at -20°C Valid for 12 months. Avoid freeze / thaw cycles.
Shipping	The product is shipped with ice pack,upon receipt,store it immediately at the temperature recommended.

Background

Collapsin response mediator protein 4 is an enzyme that in humans is encoded by the CRMP4 gene. Mostly expressed in heart, skeletal muscle, fetal brain and spinal cord. It has phosphorylation sites on Ser-522 by DYRK2 promotes subsequent phosphorylation on Thr-509, Thr-514 and Ser-518 by GSK3.

For Research Use Only