

MLF2 Polyclonal Antibody

catalog number: E-AB-66680

Note: Centrifuge before opening to ensure complete recovery of vial contents.

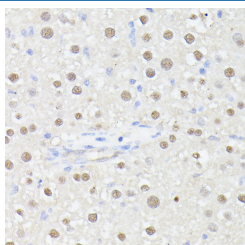
Description

Reactivity	Human;Mouse;Rat
Immunogen	Recombinant fusion protein of human MLF2 (NP_005430.1).
Host	Rabbit
Isotype	IgG
Purification	Affinity purification
Buffer	Phosphate buffered solution, pH 7.4, containing 0.05% stabilizer and 50% glycerol.

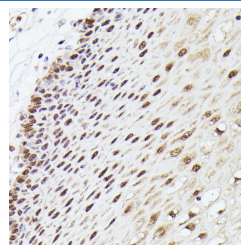
Applications

Applications	Recommended Dilution
IHC	1:100-1:200

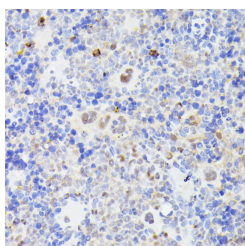
Data



Immunohistochemistry of paraffin-embedded Rat liver using MLF2 Polyclonal Antibody at dilution of 1:100 (40x lens).



Immunohistochemistry of paraffin-embedded Human esophageal using MLF2 Polyclonal Antibody at dilution of 1:100 (40x lens).



Immunohistochemistry of paraffin-embedded Mouse spleen using MLF2 Polyclonal Antibody at dilution of 1:100 (40x lens).

Preparation & Storage

Storage	Store at -20°C Valid for 12 months. Avoid freeze / thaw cycles.
Shipping	The product is shipped with ice pack, upon receipt, store it immediately at the temperature recommended.

Background

MLF2 (Myeloid Leukemia Factor 2) is a Protein Coding gene. Diseases associated with MLF2 include Myeloid Leukemia and Fatal Infantile Hypertonic Myofibrillar Myopathy. An important paralog of this gene is MLF1.

For Research Use Only