

CD107b Polyclonal Antibody

Catalog Number:E-AB-70198



Note: Centrifuge before opening to ensure complete recovery of vial contents.

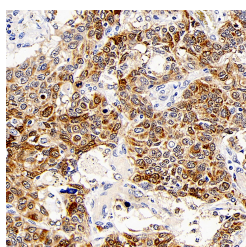
Description

Reactivity	Human,Mouse,Rat
Immunogen	KLH conjugated Synthetic peptide corresponding to Mouse LAMP2
Host	Rabbit
Isotype	IgG
Purification	Affinity purification
Conjugation	Unconjugated
Formulation	PBS with 0.02% sodium azide, 1% protective protein and 50% glycerol, pH7.4

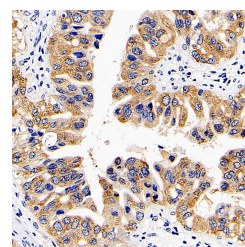
Applications Recommended Dilution

IHC	1:200-1:800
------------	-------------

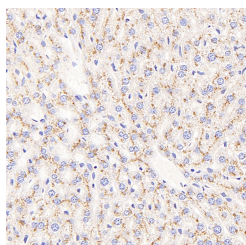
Data



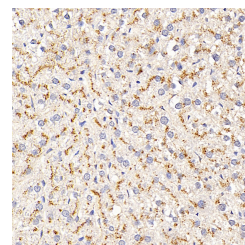
Immunohistochemistry analysis of paraffin-embedded human lung cancer using CD107b Polyclonal Antibody at dilution of 1:300.



Immunohistochemistry analysis of paraffin-embedded human liver cancer using CD107b Polyclonal Antibody at dilution of 1:300.



Immunohistochemistry analysis of paraffin-embedded mouse liver using CD107b Polyclonal Antibody at dilution of 1:400.



Immunohistochemistry analysis of paraffin-embedded rat liver using CD107b Polyclonal Antibody at dilution of 1:400.

Preparation & Storage

Storage Store at -20°C. Avoid freeze / thaw cycles.

Background

Lysosomal-associated membrane protein 2 (LAMP2,synonyms: LAMPB,CD107b) is a member of a family of membrane glycoproteins. This glycoprotein provides selectins with carbohydrate ligands. LAMP2 may plays a role in tumor cell metastasis. It may also functions in the protection,maintenance,and adhesion of the lysosome. Prior to posttranslational modification,LAMP2 is a ~45 kDa polypeptide. Mature,functional LAMP2 is extensively glycosylated with a variety of different N linked and O linked oligosaccharides.

For Research Use Only

A Reliable Research Partner in Life Science and Medicine

Toll-free: 1-888-852-8623

Web: www.elabscience.com

Tel: 1-832-243-6086

Email: techsupport@elabscience.com

Fax: 1-832-243-6017