

EPB41L2 Polyclonal Antibody

Catalog Number: E-AB-63930



Note: Centrifuge before opening to ensure complete recovery of vial contents.

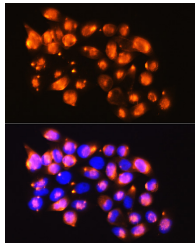
Description

| | |
|---------------------|---|
| Reactivity | Human |
| Immunogen | Recombinant fusion protein of human EPB41L2 (NP_001186317.1). |
| Host | Rabbit |
| Isotype | IgG |
| Purification | Affinity purification |
| Conjugation | Unconjugated |
| Formulation | PBS with 0.02% sodium azide, 50% glycerol, pH7.3. |

Applications Recommended Dilution

| | |
|-----------|------------|
| IF | 1:50-1:200 |
|-----------|------------|

Data



Immunofluorescence analysis of HeLa cells using EPB41L2 Polyclonal Antibody at dilution of 1:100.
Blue: DAPI for nuclear staining.

Preparation & Storage

Storage Store at -20°C. Avoid freeze / thaw cycles.

Background

EPB41L2 (Erythrocyte Membrane Protein Band 4.1 Like 2) is a Protein Coding gene. Diseases associated with EPB41L2 include Hereditary Elliptocytosis. Among its related pathways are Protein-protein interactions at synapses and Transmission across Chemical Synapses. Gene Ontology (GO) annotations related to this gene include actin binding and cytoskeletal protein binding. An important paralog of this gene is EPB41L3.

For Research Use Only

A Reliable Research Partner in Life Science and Medicine

Toll-free: 1-888-852-8623

Web: www.elabscience.com

Tel: 1-832-243-6086

Email: techsupport@elabscience.com

Fax: 1-832-243-6017