

Recombinant CNDP2 Monoclonal Antibody

catalog number: **AN300496P**

Note: Centrifuge before opening to ensure complete recovery of vial contents.

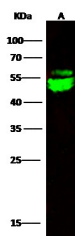
Description

Reactivity	Mouse
Immunogen	Recombinant Mouse CNDP2 protein
Host	Rabbit
Isotype	IgG
Clone	7C13
Purification	Protein A
Buffer	0.2 µm filtered solution in PBS

Applications Recommended Dilution

WB	1:500-1:1000
-----------	--------------

Data



Western Blot with CNDP2 Monoclonal Antibody at dilution of 1:500 dilution. Lane A: A431 Whole Cell Lysate, Lysates/proteins at 30 µg per lane.

Observed-MW:53 kDa

Calculated-MW:53 kDa

Preparation & Storage

Storage	This antibody can be stored at 2°C-8°C for one month without detectable loss of activity. Antibody products are stable for twelve months from date of receipt when stored at -20°C to -80°C. Preservative-Free. Avoid repeated freeze-thaw cycles.
Shipping	Ice bag

Background

Cytosolic non-specific dipeptidase, also known as CNDP dipeptidase 2, Glutamate carboxypeptidase-like protein 1, Peptidase A, CNDP2 and CN2, is a cytoplasm protein which belongs to the peptidase M2A family. CNDP2/CPGL is a cytosolic enzyme that can hydrolyze carnosine to yield L-histidine and beta-alanine. CNDP2/CPGL hydrolyzes a variety of dipeptides including L-carnosine but has a strong preference for Cys-Gly. It may play a role as tumor suppressor in hepatocellular carcinoma (HCC) cells. Isoform 1 of CNDP2/CPGL is ubiquitously expressed with higher levels in kidney and liver (at protein level). Isoform 2 of CNDP2/CPGL is expressed in fetal tissues, it is only expressed in adult liver and placental tissues. CNDP2/CPGL is highly expressed in the histaminergic neurons in the tuberomammillary nucleus, implying that it may supply histidine to histaminergic neurons for histamine synthesis.

For Research Use Only