

## Recombinant Human Nogo Receptor/NgR Protein (His Tag)

**Catalog Number: PKSH033418**

**Note:** Centrifuge before opening to ensure complete recovery of vial contents.

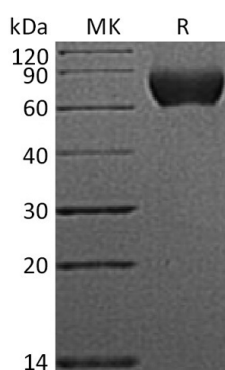
### Description

<b>Species</b>	Human
<b>Source</b>	HEK293 Cells-derived Human Nogo Receptor/NgR protein Cys27-Ser447, with an C-terminal His
<b>Calculated MW</b>	46.3 kDa
<b>Observed MW</b>	60-90 kDa
<b>Accession</b>	Q9BZR6
<b>Bio-activity</b>	Not validated for activity

### Properties

<b>Purity</b>	> 95 % as determined by reducing SDS-PAGE.
<b>Endotoxin</b>	< 1.0 EU per µg of the protein as determined by the LAL method.
<b>Storage</b>	Generally, lyophilized proteins are stable for up to 12 months when stored at -20 to -80 °C. Reconstituted protein solution can be stored at 4-8°C for 2-7 days. Aliquots of reconstituted samples are stable at < -20°C for 3 months.
<b>Shipping</b>	This product is provided as lyophilized powder which is shipped with ice packs.
<b>Formulation</b>	Lyophilized from a 0.2 µm filtered solution of PBS, pH 7.4. Normally 5% - 8% trehalose, mannitol and 0.01% Tween 80 are added as protectants before lyophilization.
	Please refer to the specific buffer information in the printed manual.
<b>Reconstitution</b>	Please refer to the printed manual for detailed information.

### Data



> 95 % as determined by reducing SDS-PAGE.

### Background

Nogo Receptor (NgR) is a glycosylphosphoinositol (GPI)-anchored protein that belongs to the Nogo receptor family. Human NgR is predominantly expressed in neurons and their axons in the central nervous systems. As a receptor for myelin-derived proteins Nogo; myelin-associated glycoprotein (MAG) and myelin oligodendrocyte glycoprotein (OMG); NgR mediates axonal growth inhibition and may play a role in regulating axonal regeneration and plasticity in the adult central nervous system. NgR may be proposed as a potential drug target for treatment of various neurological conditions. Additionally; NgR may play a role in regulating the function of gap junctions.

### For Research Use Only