

## Recombinant Human PTX3 Protein(Fc Tag)

**Catalog Number:** PDMH100235

**Note:** Centrifuge before opening to ensure complete recovery of vial contents.

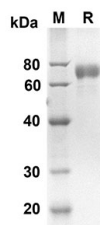
### Description

<b>Species</b>	Human
<b>Source</b>	Mammalian-derived Human PTX 3/TSG-14 protein Glu18-Ser381, with an C-terminal Fc
<b>Calculated MW</b>	64.9 kDa
<b>Observed MW</b>	60-80 kDa
<b>Accession</b>	P26022
<b>Bio-activity</b>	Not validated for activity

### Properties

<b>Purity</b>	> 90% as determined by reducing SDS-PAGE.
<b>Endotoxin</b>	< 1.0 EU/mg of the protein as determined by the LAL method
<b>Storage</b>	Generally, lyophilized proteins are stable for up to 12 months when stored at -20 to -80 °C. Reconstituted protein solution can be stored at 4-8°C for 2-7 days. Aliquots of reconstituted samples are stable at < -20°C for 3 months.
<b>Shipping</b>	This product is provided as lyophilized powder which is shipped with ice packs.
<b>Formulation</b>	Lyophilized from a 0.2 µm filtered solution in PBS with 5% Trehalose and 5% Mannitol.
<b>Reconstitution</b>	It is recommended that sterile water be added to the vial to prepare a stock solution of 0.5 mg/mL. Concentration is measured by UV-Vis.

### Data



SDS-PAGE analysis of Human PTX3 proteins, 2 µg/lane of Recombinant Human PTX3 proteins was resolved with an SDS-PAGE under reducing conditions, showing bands at 64.9KD

### Background

Ptx3, also known as tumor necrosis factor-stimulated gene sequence-14 (TSG14), is a secreted pattern-recognition receptor that has a non-redundant role in resistance to selected microbial agents. Ptx3 belongs to the family of “long pentraxins”, which have C-terminal pentraxin domains and novel amino-terminal domains. Ptx3 binds selected pathogens, including *Aspergillus fumigatus*, *Pseudomonas aeruginosa* and *Salmonella typhimurium*. It is synthesized in IgA glomerulonephritis and activates mesangial cells.

### For Research Use Only

Toll-free: 1-888-852-8623  
Web: [www.elabscience.com](http://www.elabscience.com)

Tel: 1-832-243-6086  
Email: [techsupport@elabscience.com](mailto:techsupport@elabscience.com)

Fax: 1-832-243-6017