

## ZWILCH Polyclonal Antibody

catalog number: E-AB-53208

**Note:** Centrifuge before opening to ensure complete recovery of vial contents.

### Description

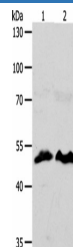
<b>Reactivity</b>	Human;Mouse
<b>Immunogen</b>	Synthetic peptide of human ZWILCH
<b>Host</b>	Rabbit
<b>Isotype</b>	IgG
<b>Purification</b>	Antigen affinity purification
<b>Conjugation</b>	Unconjugated
<b>Buffer</b>	Phosphate buffered solution, pH 7.4, containing 0.05% stabilizer and 50% glycerol.

### Applications

### Recommended Dilution

<b>WB</b>	1:1000-1:5000
-----------	---------------

### Data



Western blot analysis of HT29 cells using  
ZWILCH Polyclonal Antibody at dilution of 1:1750

**Observed-MW:Refer to figures**

**Calculated-MW:67 kDa**

### Preparation & Storage

<b>Storage</b>	Store at -20°C Valid for 12 months. Avoid freeze / thaw cycles.
<b>Shipping</b>	The product is shipped with ice pack, upon receipt, store it immediately at the temperature recommended.

### Background

This protein is essential component of the mitotic checkpoint, which prevents cells from prematurely exiting mitosis. And it is required for the assembly of the dynein-dynactin and MAD1-MAD2 complexes onto kinetochores. ZWILCH gene is deleted in a patient suffering from colorectal cancer with chromosomal instability.

### For Research Use Only