

Recombinant Human LAP3/Cytosol Aminopeptidase Protein (His Tag)



Catalog Number:PKSH030544

Note: Centrifuge before opening to ensure complete recovery of vial contents.

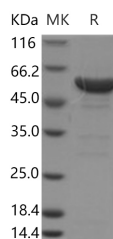
Description

Synonyms	HEL-S-106;LAP;LAPEP;PEPS
Species	Human
Expression Host	HEK293 Cells
Sequence	Met 1-Ala519
Accession	NP_056991.2
Calculated Molecular Weight	57.6 kDa
Tag	C-His

Properties

Purity	> 90 % as determined by reducing SDS-PAGE.
Endotoxin	< 1.0 EU per µg of the protein as determined by the LAL method.
Storage	Generally, lyophilized proteins are stable for up to 12 months when stored at -20 to -80°C. Reconstituted protein solution can be stored at 4-8°C for 2-7 days. Aliquots of reconstituted samples are stable at < -20°C for 3 months.
Shipping	This product is provided as lyophilized powder which is shipped with ice packs.
Formulation	Lyophilized from sterile 20 mM Tris, 500 mM NaCl, 20 % glycerol, pH 7.4 Normally 5 % - 8 % trehalose, mannitol and 0.01% Tween80 are added as protectants before lyophilization. Please refer to the specific buffer information in the printed manual
Reconstitution	Please refer to the printed manual for detailed information.

Data



> 90 % as determined by reducing SDS-PAGE.

Background

LAP3 (Leucine Aminopeptidase 3) is a Protein Coding gene. Diseases associated with LAP3 include?Bacterial Vaginosis?and?Trichomoniasis. Among its related pathways are?Arginine and proline metabolism?and?Metabolism. Gene Ontology (GO) annotations related to this gene include?peptidase activityand?aminopeptidase activity. An important paralog of this gene is?NPEPL1.

For Research Use Only

A Reliable Research Partner in Life Science and Medicine

Toll-free: 1-888-852-8623

Web: www.elabscience.com

Tel: 1-832-243-6086

Email: techsupport@elabscience.com

Fax: 1-832-243-6017