

Recombinant Human PLA2G16 Protein (His Tag)

Catalog Number: PKSH032509

Note: Centrifuge before opening to ensure complete recovery of vial contents.

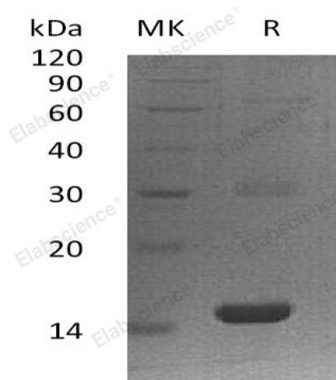
Description

| | |
|----------------------|---|
| Species | Human |
| Source | E.coli-derived Human PLA2G16 protein Asp12-Asp132, with an N-terminal His |
| Calculated MW | 14-17 kDa |
| Observed MW | 15 kDa |
| Accession | P53816 |
| Bio-activity | Not validated for activity |

Properties

| | |
|----------------------|---|
| Purity | > 95 % as determined by reducing SDS-PAGE. |
| Concentration | Subject to label value. |
| Endotoxin | < 1.0 EU per µg of the protein as determined by the LAL method. |
| Storage | Store at < -20°C, stable for 6 months. Please minimize freeze-thaw cycles. |
| Shipping | This product is provided as liquid. It is shipped at frozen temperature with blue ice/gel packs. Upon receipt, store it immediately at < -20°C. |
| Formulation | Supplied as a 0.2 µm filtered solution of 20mM Tris-HCl, 50mM NaCl, 1mM EDTA, pH8.0. |

Data



> 95 % as determined by reducing SDS-PAGE.

Background

Group XVI Phospholipase A1/A2 (PLA2G16) belongs to the H-rev 107 family. PLA2G16 is expressed in a number of human tumors including ovarian carcinomas, lung carcinomas. PLA2G16 is involved in the regulation of differentiation and survival. PLA2G16 regulates adipocyte lipolysis and release of fatty acids through a G-protein coupled pathway involving prostaglandin and EP3. It has also been reported to play a crucial role in the development of obesity in mouse models.