

MED28 Polyclonal Antibody

catalog number: E-AB-17141

Note: Centrifuge before opening to ensure complete recovery of vial contents.

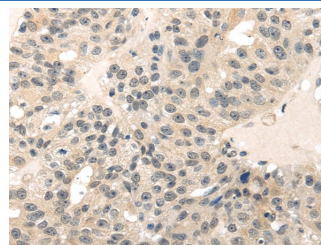
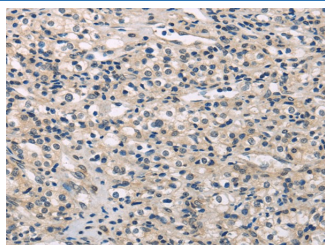
Description

Reactivity	Human;Mouse;Rat
Immunogen	Full length fusion protein
Host	Rabbit
Isotype	IgG
Purification	Affinity purification
Buffer	Phosphate buffered solution, pH 7.4, containing 0.05% stabilizer and 50% glycerol.

Applications Recommended Dilution

IHC	1:25-100
------------	----------

Data



Immunohistochemistry of paraffin-embedded Human prostate cancer using MED28 Polyclonal Antibody at dilution of 1/30 Immunohistochemistry of paraffin-embedded Human breast cancer using MED28 Polyclonal Antibody at dilution of 1/30

Preparation & Storage

Storage	Store at -20°C Valid for 12 months. Avoid freeze / thaw cycles.
Shipping	The product is shipped with ice pack, upon receipt, store it immediately at the temperature recommended.

Background

Med28 (mediator complex subunit 28), also known as EG1 (endothelial-derived protein 1), magicin (merlin and Grb2-interacting cytoskeletal protein) or tumor angiogenesis marker EG-1, is a 178 amino acid subunit of the Mediator complex that localizes to both nucleus and cytoplasm.

For Research Use Only