

Recombinant CBP Monoclonal Antibody

catalog number: **AN301457L**

Note: Centrifuge before opening to ensure complete recovery of vial contents.

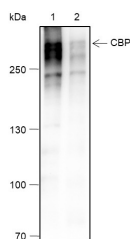
Description

Reactivity	Human;
Immunogen	Synthetic peptide derived from the human CBP protein
Host	Rabbit
Isotype	IgG, κ
Clone	A152
Purification	Protein A purified
Buffer	PBS, 50% glycerol, 0.05% Proclin 300, 0.05% protein protectant.

Applications Recommended Dilution

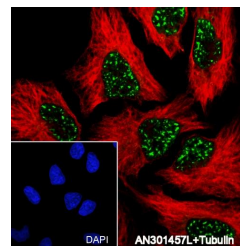
WB	1:1000-1:3000
IF	1:100-1:200

Data



Western Blot with CBP Monoclonal Antibody at dilution of 1:3000. Lane 1: 293T nuclear, Lane 2: 293T cytosol

Observed-MW:300 kDa
Calculated-MW:300 kDa



Immunofluorescent analysis of (100% Ice-cold methanol) fixed HeLa cells using anti-CBP Monoclonal Antibody at dilution of 1:200.

Preparation & Storage

Storage	Store at -20°C Valid for 12 months. Avoid freeze / thaw cycles.
Shipping	Ice bag

Background

CREB-binding protein (CREBBP/CBP), encoded by the human CREBBP gene, is a transcriptional co-activator. CREBBP functions through interactions with transcription factors, mediated by one or more domains: the nuclear receptor interaction domain (RID), the KIX domain (CREB and MYB interaction domain), the cysteine/histidine regions (TAZ1/CH1 and TAZ2/CH3), and the interferon response binding domain. The KIX, TAZ1, and TAZ2 domains of CREBBP bind tightly to the 9aaTADs, the nine amino acid transactivation domains within the tumor suppressor protein p53, thereby influencing its transcriptional activity.

For Research Use Only

Toll-free: 1-888-852-8623
Web: www.elabscience.com

Tel: 1-832-243-6086
Email: techsupport@elabscience.com

Fax: 1-832-243-6017

Rev. V1.0