

## DGCR6L Polyclonal Antibody

catalog number: E-AB-52856

**Note:** Centrifuge before opening to ensure complete recovery of vial contents.

### Description

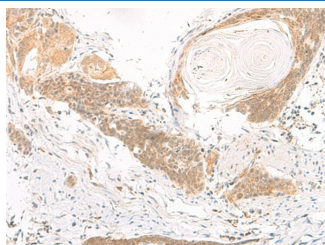
|              |  |
|--------------|--|
| Reactivity   | Human  |
| Immunogen    | Fusion protein of human DGCR6L   |
| Host         | Rabbit   |
| Isotype      | IgG  |
| Purification | Antigen affinity purification  |
| Conjugation  | Unconjugated   |
| Buffer       | Phosphate buffered solution, pH 7.4, containing 0.05% stabilizer and 50% glycerol. |

### Applications

### Recommended Dilution

|     |            |
|-----|------------|
| IHC | 1:50-1:300 |
|-----|------------|

### Data



Immunohistochemistry of paraffin-embedded Human esophagus cancer tissue using DGCR6L Polyclonal Antibody at dilution of 1:70(×200)

### Preparation & Storage

|          |  |
|----------|--|
| Storage  | Store at -20°C Valid for 12 months. Avoid freeze / thaw cycles.  |
| Shipping | The product is shipped with ice pack, upon receipt, store it immediately at the temperature recommended. |

### Background

This gene, the result of a duplication at this locus, is one of two functional genes encoding nearly identical proteins that have similar expression patterns. The product of this gene is a protein that shares homology with the Drosophila gonadal protein, expressed in gonadal tissues and germ cells, and with the human laminin gamma-1 chain that functions in cell attachment and migration. This gene is located in a region of chromosome 22 implicated in the DiGeorge syndrome, one facet of a broader collection of anomalies referred to as the CATCH 22 syndrome.