

# Lamin B1 Monoclonal Antibody

catalog number: AN005330L

**Note:** Centrifuge before opening to ensure complete recovery of vial contents.

## Description

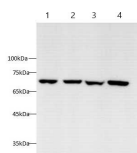
<b>Reactivity</b>	Human
<b>Immunogen</b>	Recombinant human Lamin B1 protein by E.coli
<b>Host</b>	Mouse
<b>Isotype</b>	IgG2b
<b>Clone</b>	7H10
<b>Purification</b>	Protein A/G Purification
<b>Conjugation</b>	Unconjugated
<b>buffer</b>	PBS with 0.05% proclin 300, 1% protective protein and 50% glycerol,pH7.4

## Applications

## Recommended Dilution

<b>WB</b>	1:2000-1:4000
<b>IF</b>	1:500-1:1000

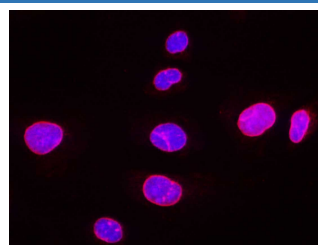
## Data



Western blot with Anti Lamin B1 Monoclonal Antibody at dilution of 1:5000. Lane 1: HL-60 cell lysate, Lane 2: HeLa cell lysate, Lane 3: Hep G2 cell lysate, Lane 4: THP-1 cell lysate.

**Observed-MV:70 kDa**

**Calculated-MV:66 kDa**



Immunofluorescence analysis of U-2 OS cells using Lamin B1 Monoclonal Antibody at dilution of 1:500.

## Preparation & Storage

<b>Storage</b>	Store at -20°C Valid for 12 months. Avoid freeze / thaw cycles.
<b>Shipping</b>	The product is shipped with ice pack, upon receipt, store it immediately at the temperature recommended.

## Background

Lamins are components of the nuclear lamina, a fibrous layer on the nucleoplasmic side of the inner nuclear membrane, which is thought to provide a framework for the nuclear envelope and may also interact with chromatin.

## For Research Use Only