

ARHGEF2 Polyclonal Antibody

catalog number: E-AB-65930

Note: Centrifuge before opening to ensure complete recovery of vial contents.

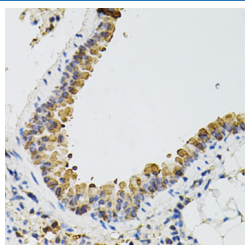
Description

Reactivity	Mouse
Immunogen	Recombinant fusion protein of human ARHGEF2 (NP_004714.2).
Host	Rabbit
Isotype	IgG
Purification	Affinity purification
Buffer	Phosphate buffered solution, pH 7.4, containing 0.05% stabilizer and 50% glycerol.

Applications

Applications	Recommended Dilution
IHC	1:50-1:100

Data



Immunohistochemistry of paraffin-embedded Mouse lung using ARHGEF2 Polyclonal Antibody at dilution of 1:100 (40x lens).

Preparation & Storage

Storage	Store at -20°C Valid for 12 months. Avoid freeze / thaw cycles.
Shipping	The product is shipped with ice pack, upon receipt, store it immediately at the temperature recommended.

Background

Rho GTPases play a fundamental role in numerous cellular processes that are initiated by extracellular stimuli that work through G protein coupled receptors. The encoded protein may form complex with G proteins and stimulate rho-dependent signals. Alternatively spliced transcript variants encoding different isoforms have been identified.

For Research Use Only