

Recombinant Human SCLY Protein (His Tag)

Catalog Number:PKSH033015



Note: Centrifuge before opening to ensure complete recovery of vial contents.

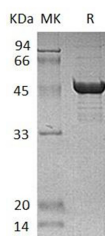
Description

Synonyms	Selenocysteine Lyase;hSCL;SCLY;SCL
Species	Human
Expression Host	E.coli
Sequence	Met 1-Ala445
Accession	Q96I15
Calculated Molecular Weight	50.3 kDa
Observed molecular weight	50-55 kDa
Tag	N-His

Properties

Purity	> 95 % as determined by reducing SDS-PAGE.
Endotoxin	< 1.0 EU per µg of the protein as determined by the LAL method.
Storage	Store at < -20°C, stable for 6 months. Please minimize freeze-thaw cycles.
Shipping	This product is provided as liquid. It is shipped at frozen temperature with blue ice/gel packs. Upon receipt, store it immediately at < - 20°C.
Formulation	Supplied as a 0.2 µm filtered solution of 20mM Tris-HCl, 150mM NaCl, pH 8.0.
Reconstitution	Not Applicable

Data



> 95 % as determined by reducing SDS-PAGE.

Background

Selenocysteine Lyase belongs to the class-V pyridoxal-phosphate-dependent aminotransferase family. Selenocysteine Lyase exists as a homodimer in the cytosol. In the brain, Selenocysteine Lyase is an enzyme that putatively salvages Sec and recycles the selenium for selenoprotein translation. Selenocysteine Lyase catalyzes the decomposition of L-selenocysteine to L-alanine and elemental selenium. Selenocysteine Lyase can be up-regulated In acute glomerulonephritis, it can also be regulated by JUN/AP-1.

For Research Use Only

A Reliable Research Partner in Life Science and Medicine

Toll-free: 1-888-852-8623

Web: www.elabscience.com

Tel: 1-832-243-6086

Email: techsupport@elabscience.com

Fax: 1-832-243-6017